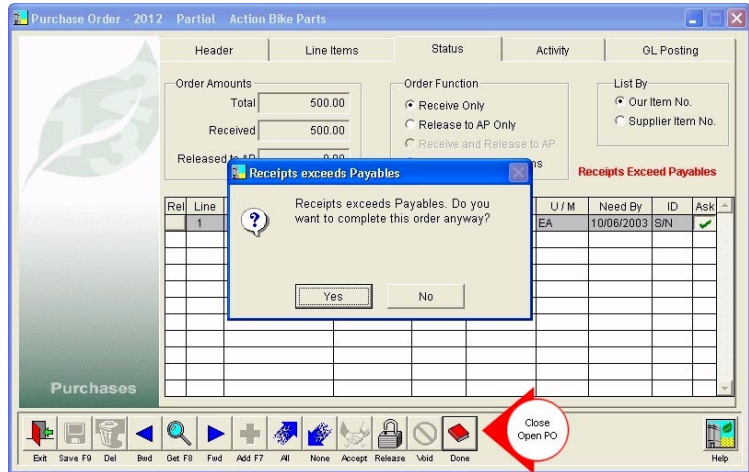


# New Features in ALERE™ v3.3!

**Faster Shipping, Invoicing and Voiding** - Powerful new code makes shipping, invoicing and voiding functions faster than ever.

**PO Done Button** - Received but unbilled purchase orders can now be closed with the **Done** button. This permits purchase orders to be closed in the situations where there is no invoice or the invoice is for less than the amount actually received. For example, you receive 1,050 of Product A but the invoice shows a quantity of only 1,000. The PO is left with the value of the remaining 50. The **Done** button handles that difference and allows the PO to be closed.



**Changeable PO Line Item Costs** - Purchase order line items can now have their unit costs changed right up to the point when they are released.

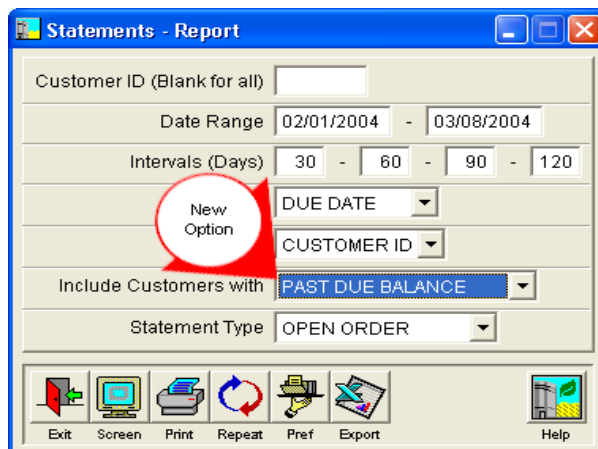
**Improved Manual Payables Control** - During the process of entering a new manual accounts payable invoice you can now specify the discountable amount. This allows tax and/or shipping to be excluded from the discount calculations.

**Credit Memo Conversion Date** - The date of the payable being created when converting a credit memo to a payable can now be specified.

**Add New Items to All Locations** - The *Inventory Master* screen now provides an option to add a new item to one or all locations during the creation process.

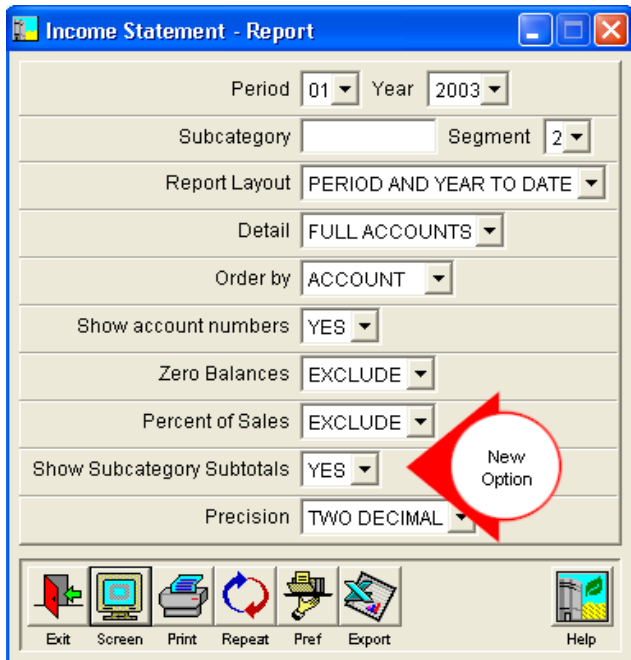
**Last Cost Decimal Places** - The **Last Cost** field on the *Inventory* screen *Supplier* tab now goes to five (5) decimal places.

**Past Due Customer Statements** - Customer statements have a new option that allows them to be printed not only for zero balances and outstanding balances but also for past due balances.



**References for Deposits** - A reference can now be entered when making a deposit using the *Bank Transactions* screen.

**Banking Account Hyperlink** - Changing the account number on one of the *Bank Reconciliation* screen tabs will automatically update the other tab. This keeps the two tabs synchronized.



**Subtotals for Subcategories** - A new option on the *Income Statement* report permits subcategory subtotals to be included. This provides more visibility to departmental tracking.

**Improved GL Report** - The *General Ledger* report now displays order numbers and can be filtered by journal references. For instance, being able to filter by references allows you to group all the transactions together that occurred on a specific order number.

**Editing Journal Notes** - The notes on general ledger journal entries can now be edited even after the entry has been posted. This provides an additional level of documentation for general ledger entries by allowing follow up key information to be added even after the entry has been posted.

**Print GL Journal Notes** - The *General Ledger Journal* report has an option to include notes that were recorded on journal entries. This provides an additional level of traceability for general ledger entries.

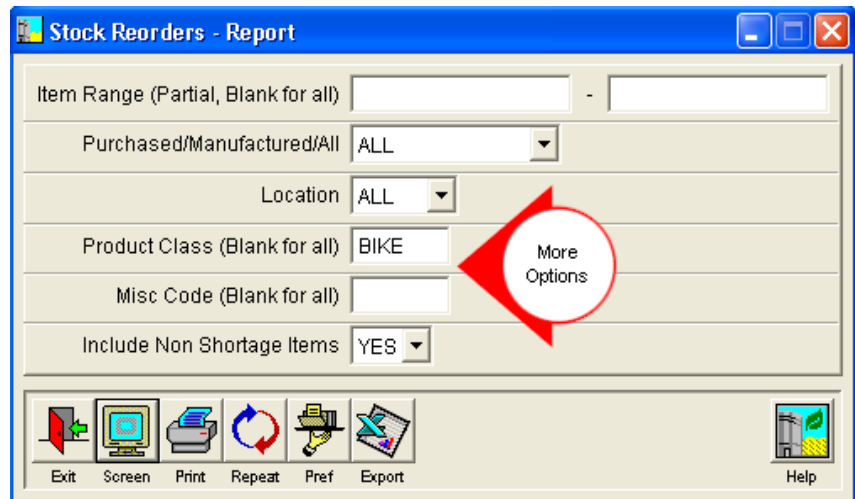
**Expanded Daily Shipments Report** - Full inventory descriptions can now be printed on the *Daily Shipments* report.

**Enhanced Stock Reorders Report** - The inventory *Stock Reorders* report has new options to filter by product class and miscellaneous codes. These additional filters help manage inventory levels by allowing the user to better target specific areas to monitor.

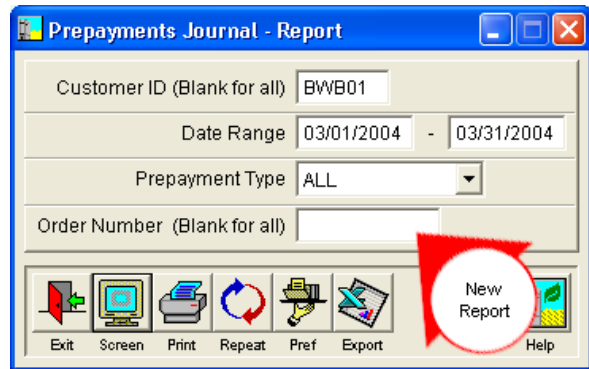
**Better Customer Transactions Report** - Totals can now be included on the *Customer Transactions* report, and there is an option to summarize the information so that there is only one line per customer.

**Inventory Item List** - The inventory *Master Items* report can now optionally produce a report that only shows a list of item numbers and descriptions. This is a particularly useful report for reviewing item numbers and creating catalogs.

**Line Type Option** - The *Unrecognized Payables* report can now be run for all line types, *Purchase* line types or *Return* line types.

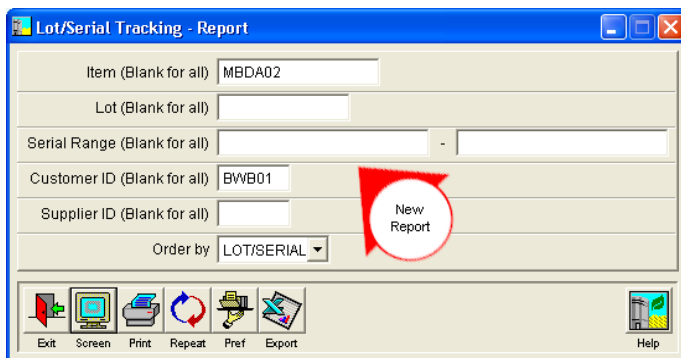


**Prepayments Report** - A report to track customer prepayments has been added to ALERE. The *Prepayments* report will list all prepayments that have an open balance along with the check number and the amount. The report distinguishes between amounts tied to specific sales orders and amounts on open account. It also provides a running balance of the remaining amounts that have not been applied to invoices.



**Updated Cash Receipts Report** - The *Cash Receipts* report has been reorganized and reformatted to better present information.

**Fax Numbers** - Reports that are sent to suppliers and customers now have your company's fax numbers on them.



**Lot/Serial Tracking Report** - A report to track lots, serial numbers, and traits has been added to ALERE. The report will show the supplier from which the items were acquired along with the purchase order number. It will also list the customer and the sales order or invoice number which purchased them. Options on the report will allow you to inquire about specific lots or serial numbers for any item.

**Error Source ID** - The General Ledger error log now lists the source ID of any errors.

**More Audit Fields** - Eight additional tables can now be stamped with User ID's and times.



769 Youngs Hill Road, Easton, PA 18040-6726

Phone 610.258.5161 Fax 610.258.6217

Visit our web site at:

**[www.tiwcorp.com](http://www.tiwcorp.com)**

Copyright © 2004 by TIW Technology, Inc. ALERE, Treevision,  
and the TIW logo are trademarks of TIW Technology, Inc. All  
rights reserved.