



PrLink



Flexible solutions to meet your needs! Save time and reduce errors by automating the transfer of financial information from your Abra payroll system to ALERE Accounting General Ledger. Integration is made easy with **PrLink**.

PrLink allows you to:

- ◆ Run the interface from an ALERE menu option.
- ◆ Link multiple PR companies to one GL company.
- ◆ Post transactions to either the General Ledger, Bank Reconciliation or both.
- ◆ Post summary or detail transactions, or mix and match if you like.
- ◆ Repost transactions if necessary.
- ◆ Use the lingo table for user-defined options.
- ◆ Map accounts globally or by company.

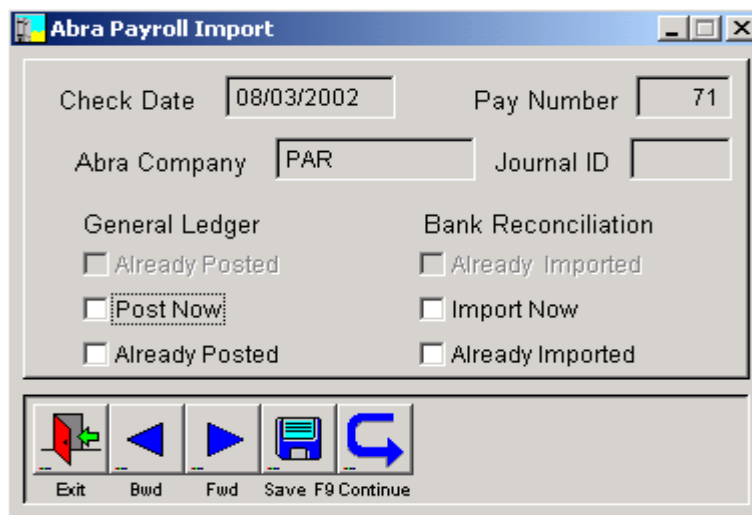


Figure 1: Abra Payroll Import Screen

Please contact your ALERE Accounting VAR for more information.



Paragon Enterprises, Inc.

924B Merchants Walk • Huntsville, AL 35801 • Phone: (256) 534-4693

Fax: (256) 534-4818 • www.paragon-cpa.com • Email: prl@paragon-cpa.com