

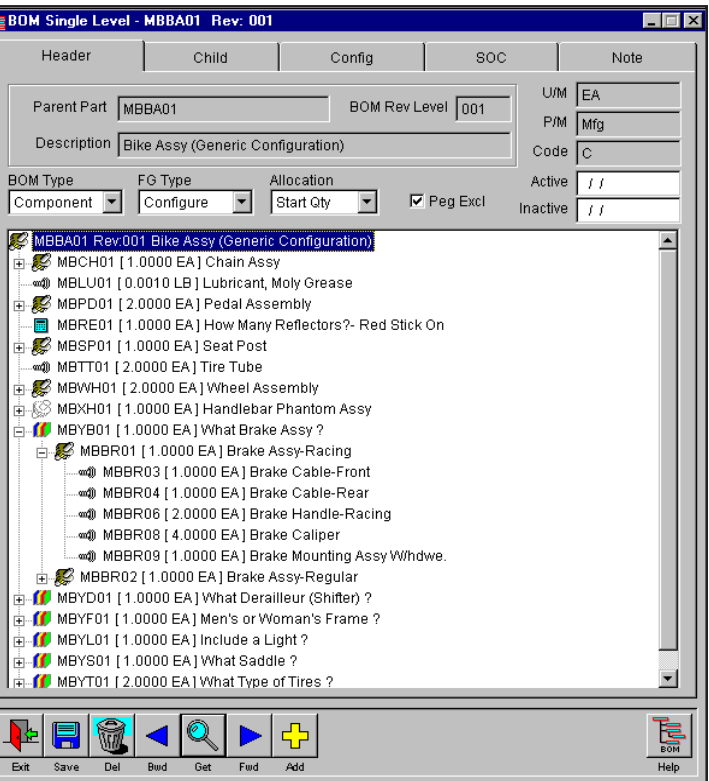
New Features in WorkShop v6.5A!

Treevision™ Technology - Create and browse complicated bills of material with an Explorer-like interface! Small icons represent each type of BOM and provide elegant visual cues! Click on the box with the plus (+) sign and expand the view to the next BOM level! Right click on an item and find all the bills in which it is used! Track and correct circular bill references quickly and easily! Treevision will speed up BOM construction, reduce training, and decrease mistakes in your bills!

Visible Overhead Transactions - Overhead transaction postings are visible on the *Work Order Transaction* tab! Those transactions generated by calculating a percentage of direct labor dollars have the amount suppressed on the screen to preserve confidentiality!

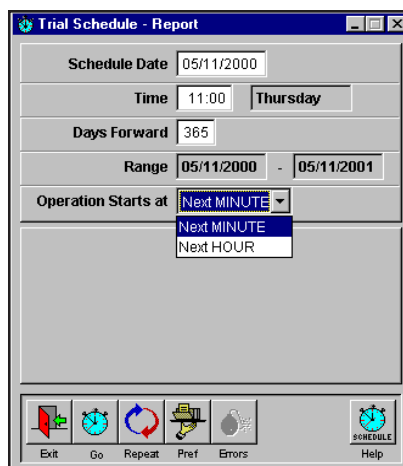
Two New Overhead Methods - Post overhead manually or create and use custom overhead transactions!

Speed Improvements - Speed has been greatly increased resulting in less time to type characters in browsers and the faster calling up of configurations!



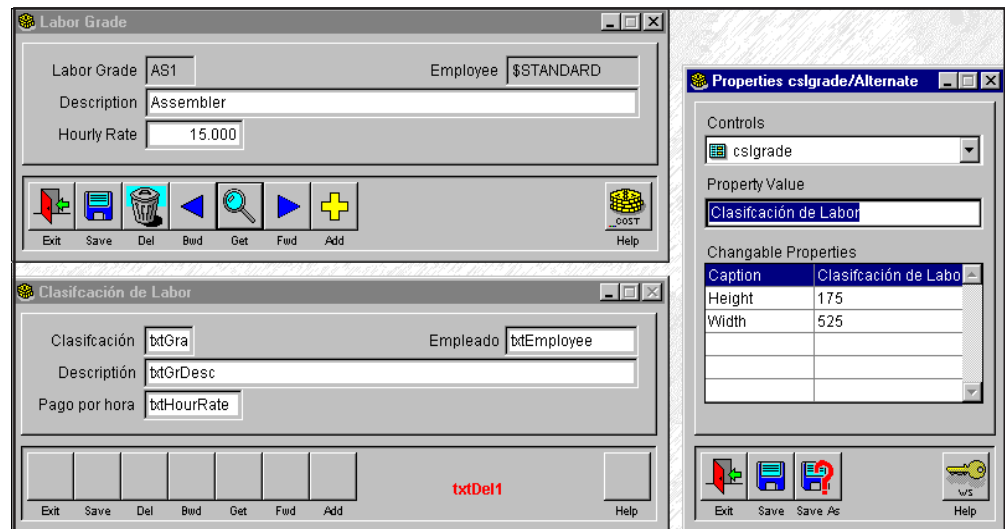
One-Minute Scheduler - You can now select one-minute resolution or one hour resolution scheduling! Using one-minute resolution, operation steps are calculated to the second and then rounded to the next whole *minute* where the next operation step starts. Using one-hour resolution, operation steps are also calculated to the second but are then rounded to the next whole *hour* where the next operation step starts. The one-minute option provides a tremendous increase in resolution and is achieved without significant sacrifice in scheduling speed! A perfect solution for jobs with operation steps that last only minutes!

Change Part Number and Description Lengths - Part numbers and descriptions are driven by the *Data Dictionary* so you can customize them to the length you need!



Adding New Modular Choices - Existing *Finish Good Configurations* are automatically updated when a new modular choice is added to a BOM!

Peg Exclusive Configurations - Individual finished good configurations can be marked as *Peg Exclusive* which greatly enhances the functionality of materials planning!



Language Setting - Modify forms and save them in a separate file where they can be globally turned off and on by selecting an option from a pull-down window!

Modify Forms Tool - An elegant and intuitive tool gives you the capability of modifying form layouts, sizes, titles, field sizes, and language without touching the source code! Modifications are table-driven to minimize impact on upgrades!

WorkShop Localization - WS_LINGO Table has been expanded! Embedded messages have been moved to the table and WorkShop may be localized in foreign or vertical industry language through table-driven changes and Developers Kit modifications!

Stand-Alone Plan Module - The Plan Module can now be used by itself when linked to an accounting package! Used in this manner you can receive time-phase recommended purchase orders!

Expanded Quantity Field - The quantity field is 12 spaces wide!

Time Pad Popup - Double click on a time field and get an easy to use pop up pad for entering time with a mouse! A perfect complement to the date field pop up! It is easy and intuitive to use!

Finished Goods Report Option - List all *Finished Good* bills in one easy report!

