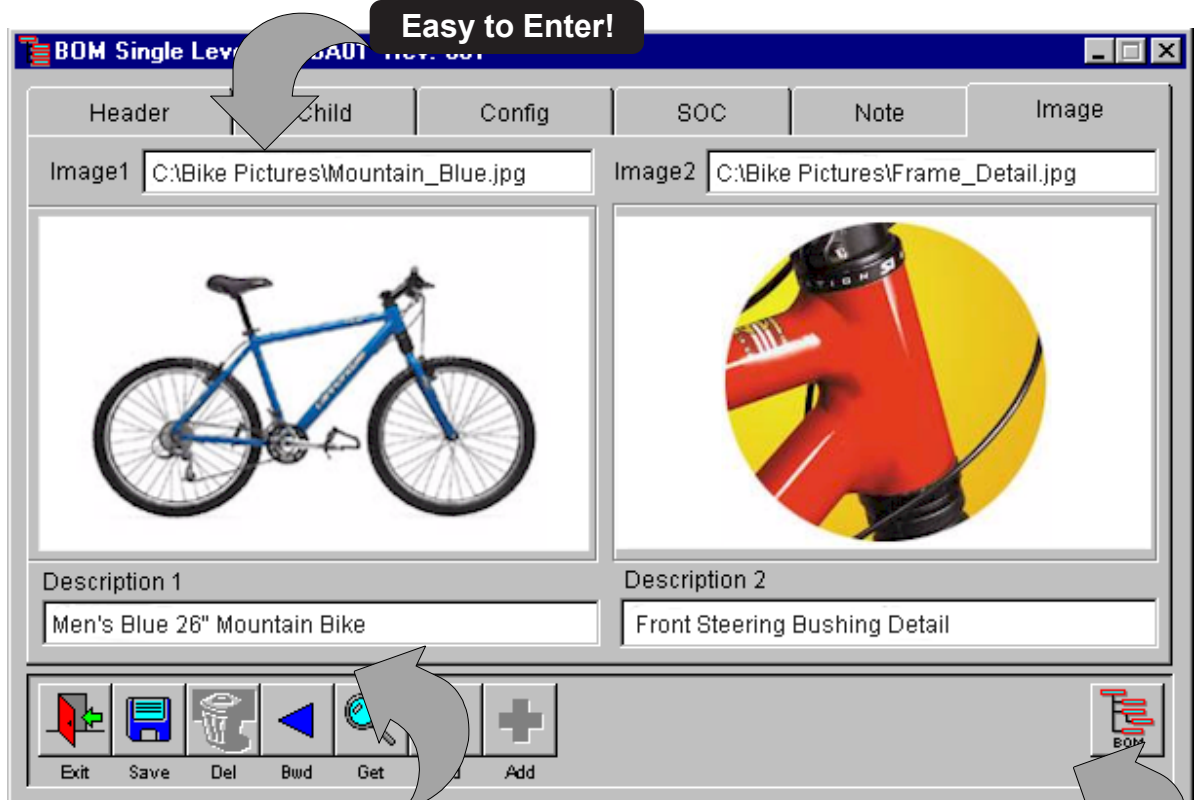


New Features in WorkShop v7.5!

Images for Bills of Material - Now you can assign up to two images to any bill of material! Adding images to a BOM is easy. Just click on the new BOM **Image** tab, double click in the one of the two path fields, and select the image you want. WorkShop will accept BMP, GIF, JPG, and ICO formats. Export CAD drawings as BMP files and include them in your bills!



Unlimited Descriptions!

Stretch Screen to Enlarge Image!

Each image can have a description associated with it that will accept virtually unlimited text! Write all you want about features, options, assembly instructions, or any other "special" notes!

Using the TIW **Dynamic Screen Sizing** technology, the screen can be stretched to enlarge the image or show more lines of description! You can even save your preference for a screen size and WorkShop will remember it the next time the screen is opened!

ALERE Accounting Links - WorkShop v7.5 contains the links that are necessary to integrate with TIW's new accounting package called ALERE Accounting. With the release of ALERE, you can now have an ERP system with seamless integration from one vendor - TIW!

ALERE inherits the advanced technology of WorkShop and contains many enhancements designed specifically to better support the manufacturing process. As an example, ALERE extends material planning support in WorkShop to include preferred suppliers, by location, for each item in inventory. Among other features, this allows supplier item numbers to be associated with your item number and makes lead times, minimum order quantities and order increments available by item by location by supplier!



Operation Library Report - A new report allows you to print a detailed list of all the Operation Library steps!
The available report options allow you to list which operation steps are used by which work centers!



By Operation by Work Center!

769 Youngs Hill Road, Easton, PA 18040-6726
Phone: 610.258.5161 Fax: 610.258.6217 email: info@tiwcorp.com

Visit our web site at:
www.tiwcorp.com