

New Features in WorkShop® v8.1!

Mass Transactions - Completely process one or many work orders in a single easy step! Using the *Mass Transactions* screen, you can now mass FPO orders, mass issue all the material assigned to them, mass post all the standard labor on their routes, and mass complete them, all at the same time!

The *Mass Transaction* screen has also been improved so that any column in the grid listing the work orders can be sorted by clicking on the column header.

New Material Return and Labor Transactions - Three new work order transactions have been added.

- The **LA** (*Labor All*) transaction automatically posts all the standard setup and cycle time labor on an operation step.
- The **MX** (*Material Undo Issue*) transaction will reverse a material issue transaction and reallocate the material on a work order.
- The **MU** (*Material Undo Issues All*) transaction will reverse all material issues on an operation step and reallocate all the material on that step of the work order.

Time Analysis Report - Now the actual labor times posted on work orders can be used to increase the accuracy of routes in the master route file. A new report in the Route Module, called *Time Analysis*, allows data collected on work order routes to be analyzed to find the min/max/average times for setup and cycle times for each operation step along with the duration of those steps.

Labor Grade Load Button - Easily load employee data from another labor grade using the **Load** button when creating a new labor grade!



Print Range of Costed BOM's - The *Costed BOM* report can now be printed for a range of item numbers. Simply enter a beginning item number and an ending item number and a costed bill will be printed for every item in that range.

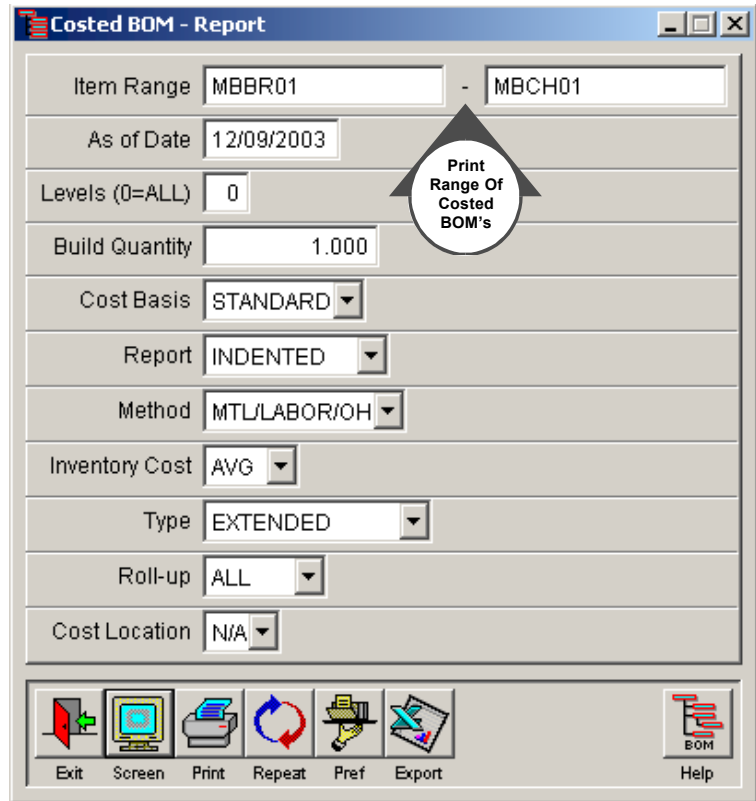
Copy BOM Configurations -

Finished Good configurations can now be copied from one BOM revision to another. Since these predefined configurations can be quite extensive for some companies, this feature can save a lot of time and reduce errors when setting up a new BOM revision.

MRP Report Enhancements -

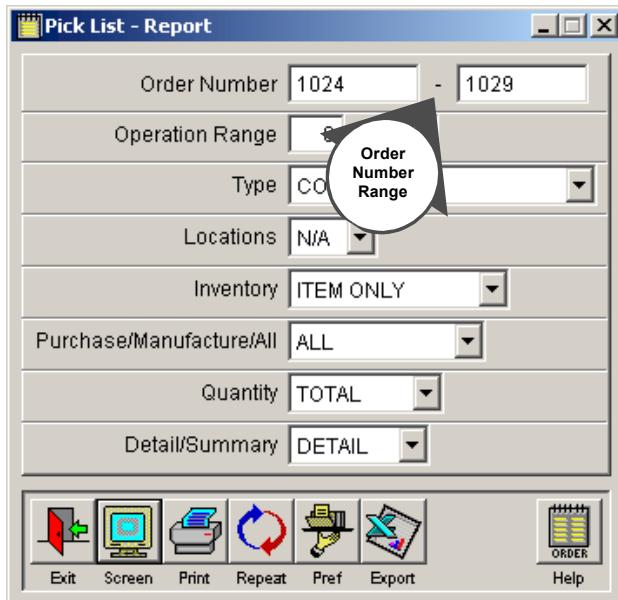
Several improvements have been made to the *MRP Planning* report.

- An option has been added to exclude material supply anticipated from purchase and work orders that have not been received.
- The report can be run for partial item numbers.
- Units of measure for quantities are displayed on the MRP Detail report.



New Work Order Features - Several new work order enhancements have been made.

- The time it takes to create a new work order has been reduced by allowing an existing work order to be duplicated with a single click of the **Copy** button. The new work order is in an unplanned or unconfigured state and can be modified before being released through the FPO process.
- The *ID* tab now has a **Print** button to print the *Material ID* report for that order.
- A **Load** button on the *Route* tab allows steps to be added to the work order route from the *Route Operation Library*.
- The item description field on the *Header* tab is automatically sized according to the accounting system with which WorkShop is linked.



Print Range of Pick Lists - The *Pick List* report can now be printed for a range of work orders. Simply enter a beginning order number and an ending order number and a pick list will be printed for every order in that range.

General Report Improvements - A number of reports have had minor enhancements made to them.

- The *Open Order* report can be run for partial item numbers.
- The *Work Order Transaction* report is summed for total dollars and/or total labor hours.
- The *Work Order Analysis* report now totals the quantity of labor on each order.
- The *PO Requisitions* report includes the quantity of each item on an order.

- The *Net Trial Requirements* report now has an option to save configurations to make it easier to run several times.

General Environment Enhancements - A number of product-wide enhancements have been made to WorkShop.

- Tabbing past the last field on a screen now defaults to the **Save** button rather than the **Exit** button.
- Browser search functions now default to "\$" rather than ">=".
- Configuration screen now allows direct keyboard entry of variable and modular choices.
- The *Report* menu choice has been moved to the bottom of the menu for each module except for the WS Manager module, where it remains in the same position.



769 Youngs Hill Road, Easton, PA 18040-6726

Phone 610.258.5161 Fax 610.258.6217

Visit our web site at:

www.tiwcop.com

Copyright © 2003 by TIW Technology, Inc. ALERE, Treevision,
WorkShop, and the TIW logo are trademarks of
TIW Technology, Inc. All rights reserved.