

ALERE® Business Applications

NEW
FEATURES

New Features ALERE® Manufacturing version 9.1

A Review of the New Features
and Changes In this Release

June 2007

Brand Name Change - With this release the venerable WorkShop name is being retired and the product now becomes known as ALERE® Manufacturing!

Fetch - Introducing a totally new way of getting to information in ALERE Manufacturing!



No matter what you are trying to find - a work order using a customer PO, a bill of material, a route, or a red bicycle - **Fetch** will do the job quickly and easily!

Fetch is always at the ready! All you have to do is enter what you want to find and click on a link. As you type, a drop down window displays similar fetches that can be selected. Your information is retrieved as soon as a link is chosen.

Say a customer calls and wants to find out what jobs he has in the shop and the status of each job. Enter his company name in **Fetch** and click on the “by Customer” link. His work orders are quickly found and displayed. From those orders you can see where they are in the manufacturing process.

It is that easy! Also notice that you did not have to exit the work you were doing or even open another module or screen!

You can set **Fetch** to display automatically on start up or select it from *Window* on the menu bar. **Fetch** can also be found on the *Data Gateway* screen.

Fetch is waiting to play; retrieving information has never been easier!

Email & Web Links - Web and email links that are typed in memo fields make it easy to send a message or tie a company’s web site to critical documents!

To enter a web link simply start with a “www”. To enter an email address start with a “mailto:”.

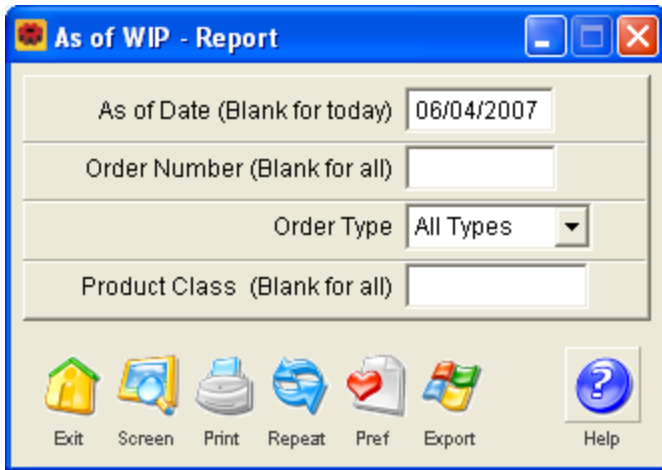
This is a great way to put key contact information on a work order or add a supplier’s web site to a bill of material.

Pegging Orders - A new option on the *Generate Recommended Orders* screen in the Plan module allows you to decide whether or not to retain the link to the sales orders for all orders or just for the peg exclusive orders. This feature is designed for companies that want to keep a one-to-one relationship between a sales order and a work order. Normal MRP processes will work to consolidate the same item ordered on several sales orders into one work order.

Export Costed Rollups - An **Export** button has been added to the *Costed Roll Up* screen that allows you to name and save a costed BOM as an Excel spreadsheet!

New Companies - The process of adding new companies now includes options to import static data like bills of material, routes, work centers, the operation library, labor grades, etc. This simplifies the preparation work that needs to be done before starting to use a new company because much of the start up data can be pre-loaded and modified, which reduces implementation time.

As of WIP Report - Now you can see work in process values for any date by using the new *As of WIP* report in the Cost module! The report has options that allow it to be run for a specific work order number or all orders in a product class. You can even specify the type of work order, such as Assemble, Build, Maintenance, etc.



Global Lingo - The capabilities of the *Language* option on the *Company Defaults* screen have been broadened and changed to *Global Lingo* and *Local Lingo*. In general, *Global Lingo* permits changes to be implemented to all users and *Local Lingo* pertains to individual users.

Inventory Lookup - When you are in the middle of building or maintaining a BOM, it is often helpful to have easy access to inventory information about a component on the bill. Now you can by going to the

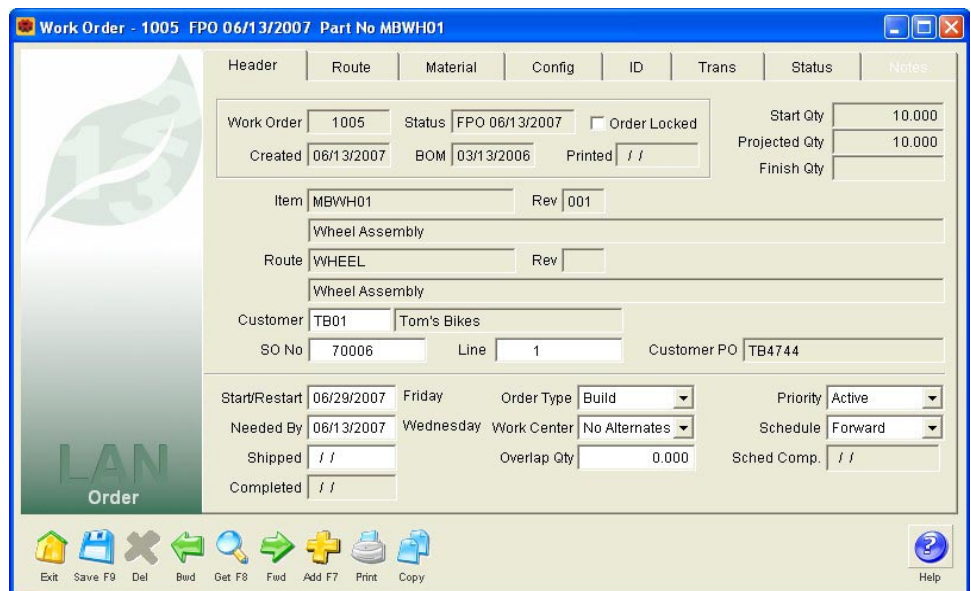
Treevision overview of the bill, right clicking on the component, and then selecting the *Inventory* option from the pop up menu. The *Inventory* screen will be displayed for the item selected.

Work Orders - The screen for work orders has been updated and rearranged to include customer purchase order numbers. Customer PO's are automatically brought over from sales orders just as the customer ID, name, sales order number and line number information is when the order is created.

This allows searches to be done by customer PO number!

Lock Orders - Work orders can be locked so that no transactions can be made! The **Order Locked** check box on the *Work Order Header* tab controls the locking and is protected by a password.

Having the option to lock work orders can give supervisors the ability to control when transactions are allowed.



Customer PO Lookup - The browser for work orders can now be used to find orders by customer PO. When the browser is displayed, scroll right to the *Customer PO* column and right click on the title of the column. Type in the purchase order number and click on the **Search** button. That is all there is to it!

GL Manufacturing Journal - Now you can see the general ledger journal entries being posted to the ALERE Accounting system using the new *GL Manufacturing Journal* report in the Manager module! The report has options that allow it to be run for a specific work order number, a range of dates, and even a range of accounts!

Report Improvements - Here are a couple of new features for reports.

- The report option combo boxes now use proper upper and lower case text rather than all upper case.
- The *Sales WIP* report in Order has new options for **Product Class** and **Needed Date Range**.
- The *Completion* report in Schedule has new options to filter by **Item** and to order by **Work Order** or **Item**.
- The *Costed BOM* report in BOM has a new option choice of **No Roll-up** under **Report**.

GL Manufacturing Journal - Report

Order Number (Blank for all)

Date Range (Blank for this month) 06/01/2007 - 06/30/2007

Starting Account (Blank for all) 11160-STD

Ending Account (Blank if same) 11240-STD

Exit Screen Print Repeat Pref Export Help

Button Improvements - Here are a couple of new button features.

- The **Errors** button on the *Trial Schedule* screen now brings up the *Errors in Schedule* screen.
- A **Print** button has been added to the *Login Options* screen.

Close Screens - A new Window menu option called *Exit All Screens* will automatically close all open screens on the desktop.

User Rights - Several new user rights have been added.

- CRAW - Controls access to the new *As of WIP* report.
- OFLK - Controls access to the new work order locking option.
- ORGL - Controls access to the new *GL Manufacturing Journal* report.

Fetch Revealed

The screenshot shows the Fetch software interface with a search bar containing 'MBBA01'. The interface is divided into several sections: Order, Inventory, BOM, Route, Work Center, and Cost. Each section has a list of search criteria with corresponding icons. Red callout boxes point to various search options with descriptive text.

Fetch
MBBA01

Order

- by Order Number
- by Finished Item
- by Sales Order
- by Customer PO
- by Customer
- by Material Item
- by Route Number

Inventory

- by Item
- by Description

BOM

- by Parent Item
- by Child Item

Route

- by Route Number
- by Description
- by Work Center ID

Work Center

- by Description

Cost

Start by entering what you are looking for here

Find Orders by the items being made!

Find any orders using a specific route!

Find any BOM by its parent item number!

Find a work order using a customer PO!

Find an item in inventory by using a description!

Find a route quickly and easily!

Find a work center using a description!

It does not matter what you are doing - Fetch is available!

Productivity goes up the first time you use it!

*Less key strokes
Less time
Less problems!*

Need to find an item in inventory using a description? No Problem!

No training required because it is so easy to use!

*Any Document!
Anytime!
Anywhere!*

Fetch will fast become your most used tool!

Never stop what you are doing to find information!

A Radical New Way of Retrieving Information in Your Manufacturing System!

769 Youngs Hill Road, Easton, PA 18040-6726

Phone 610.258.5161 Fax 610.258.6217

Visit our web site at:

www.tiwcorp.com

Copyright © 2007 by TIW Technology, Inc., ALERE, Treevision,
and the TIW logo are trademarks of TIW Technology, Inc.
All rights reserved.