

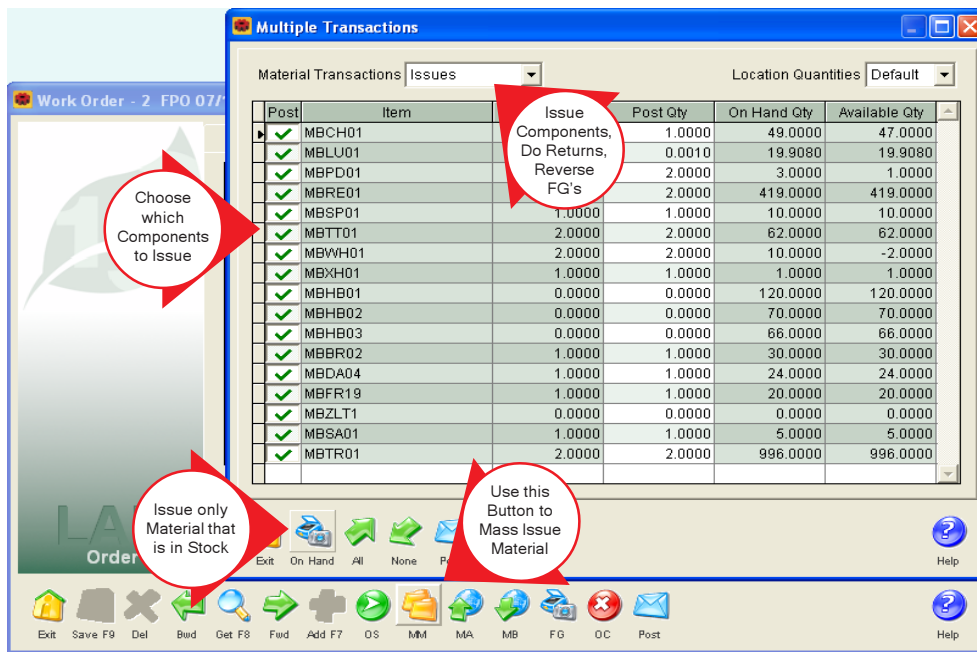
**NEW FEATURES**

## New Features ALERE<sup>®</sup> Manufacturing version 9.3

A Review of the New Features  
and Changes In this Release

November 2009

**Mass Material Transactions** - A new option for issuing material on work orders can not only make the process smoother but also quicker. A screen will display the material allocated to an operation step. There you can click one button to issue the entire list, another button to issue all material that has sufficient quantity in inventory, or specifically choose what is to be issued and the quantity. The same process will handle material returns and reversing finished goods postings.



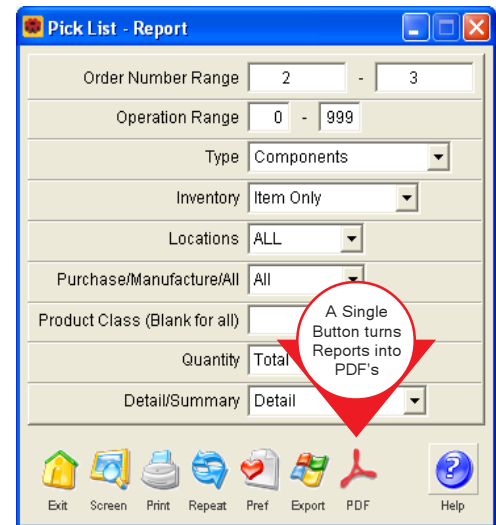
*Material Issues Made Easy!*

Here is one example of how the new material issue function can be used. You want to issue a long list of material to the first step on a work order but one of the components does not use the default warehouse location. Just click the button that selects all of the items, unclick the item that is the exception, and

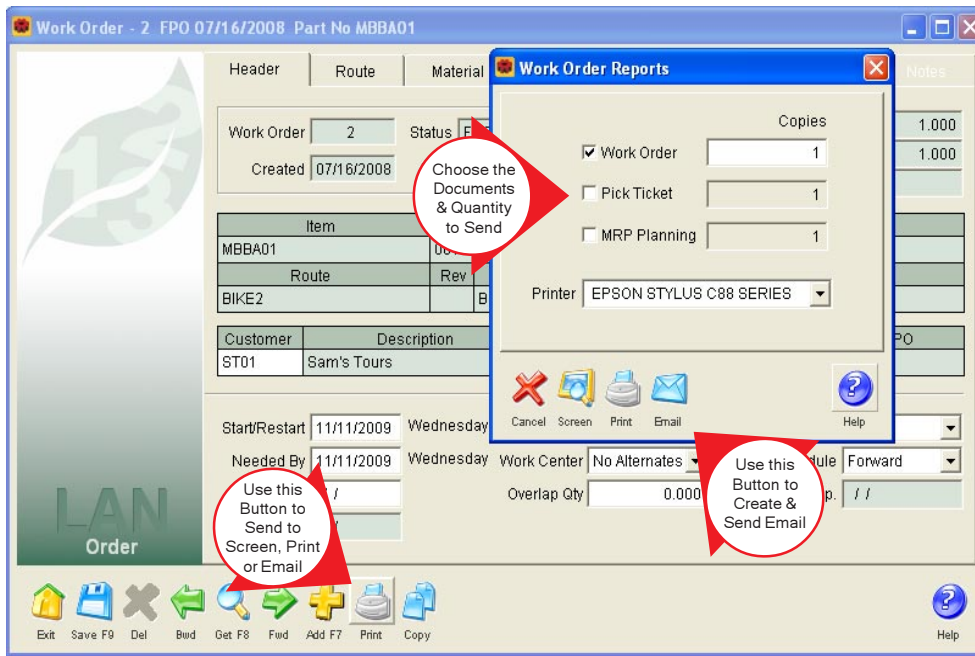
issue the list of material. Then go back and click the exception item, specify the location, and issue it. Much more straightforward than issuing all the items one-by-one!

**BOM Enhanced** - The description on the BOM screen has been expanded to sixty characters. In addition, if a modular BOM is created and that item already exists in inventory with a price, then a warning is given.

**PDF Reports** - Every report in ALERE Manufacturing can now be turned into a PDF file to make it easy to share and add to an email. The PDF files are logically named to make it easy to identify them. Even reports that are printing multiple documents, a range of work orders for instance, can be automatically turned into multiple PDF files. It is as simple as clicking on the **PDF** button on the report option screens!



*Turn Every Report into a PDF Document!*



*Print the Order, Send it to the Screen or Email it!*

**Email Button** - Added to the capabilities of the Print button on the Work Order screen is an Email button that will automatically convert the order into a PDF file and send it via email! You can add a stored note to the email or actually bring up the email to enter your own personalized message.

**Material Assignments** - Assigning material to a route step can now be done from the BOM Treevision™ screen. Simply right click on the item and select the *Material Assignment* option. Additionally, a Hyperlink has been created between

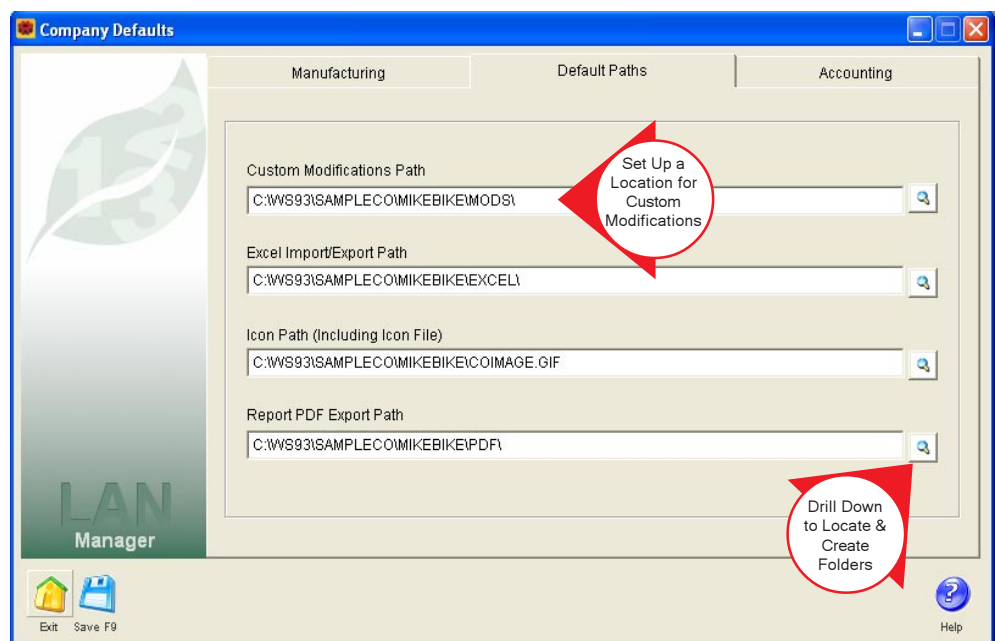
the *BOM* screen and the *Route Material Assignment* screen. The link opens an existing assignment or creates a new one if one does not exist.

**Mass Key Changes** - Large numbers of key changes can be accumulated on an Excel spreadsheet and then imported and processed all at one time.

**Extended MRP Report Options**- The *Resolution* option on the *MRP Planning* report has an added option to include the finished goods for items that need to be issued to work orders. There is also a new filtering option for item types.

**Company Default Paths** - A new tab, called **Default Paths**, has been added to the *Company Defaults* screen. This tab allows paths to be set up as defaults defining where custom modifications reside, where the company icon can be found, where reports export their data to Excel files, and where reports will place the PDF files that are created.

The ability to set a path for modifications means that if ALERE Manufacturing is operating with several companies, then each company could potentially have it's own unique customizations stored in separate locations. This provides a great deal of operational flexibility.



*Company Default Paths Add Flexibility!*

**Extended Planning Options** - When material planning recommends a list of purchase orders to a supplier, that list can optionally be grouped together to create one purchase order regardless of when the material is needed. In addition, there are now options to include items that can be purchased or manufactured on recommended purchase orders.

**Item Descriptions** - The export of Costed or Indented bills of material to Excel spreadsheets now includes descriptions for items. This matches the width of the field used by ALERE Accounting.

**Adjust Dates Option** -

When material planning recommends a list of work orders to create, the dates the items that are being manufactured need to be started and the dates when they are needed to be completed can be adjusted.

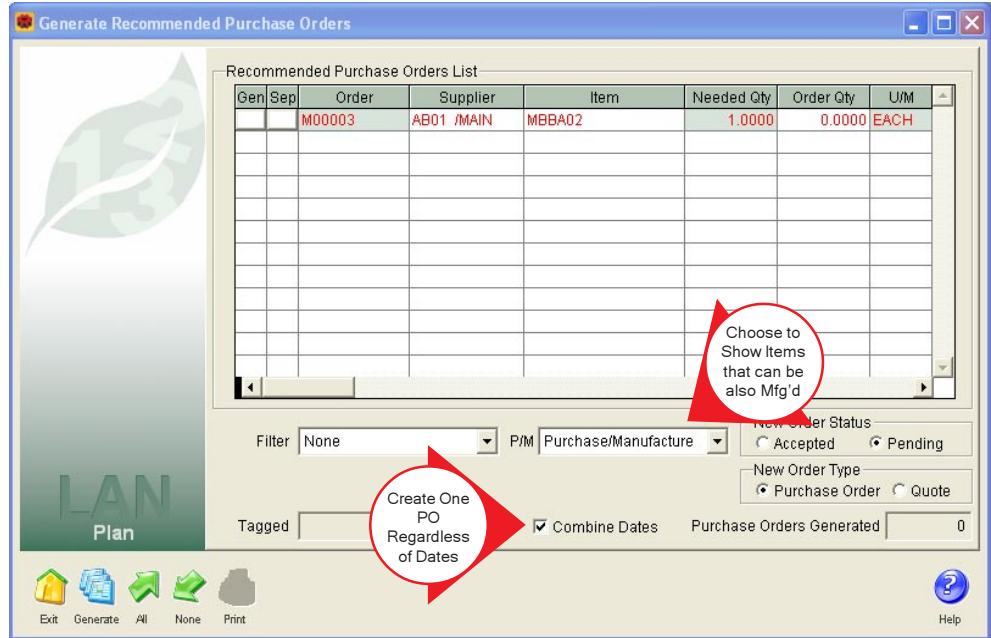
**Transaction Report Option** - A new option on the *Transaction* report allows the it to be run for order types such as Assemble, Build, Maintenance, Rework, or Work Order type.

**Extended Push/Pull Report Options** - Two new options that allow the report to be filtered by location and to be filtered by item type have been added to the report.

**Finished Good Information** - The finished good that requires the item that the *Item MRP Planning* function was run for can be displayed by clicking on the line on the grid that shows it being issued to manufacturing.

**Calendar Expansion** - The pop up calendar has expanded the number of weeks that are visible from six to eight!

**New Installer** - A new installer which is compatible with 64 bit operating systems is now used to install and set up ALERE Manufacturing.



*Extended Recommended Purchase Order Options!*



769 Youngs Hill Road, Easton, PA 18040-6726  
Phone 610.258.5161 Fax 610.258.6217

Visit our web site at:

**[www.tiwcorp.com](http://www.tiwcorp.com)**

Copyright © 2009 by TIW Technology, Inc., ALERE, Treevision,  
and the TIW logo are trademarks of TIW Technology, Inc.  
All rights reserved.