

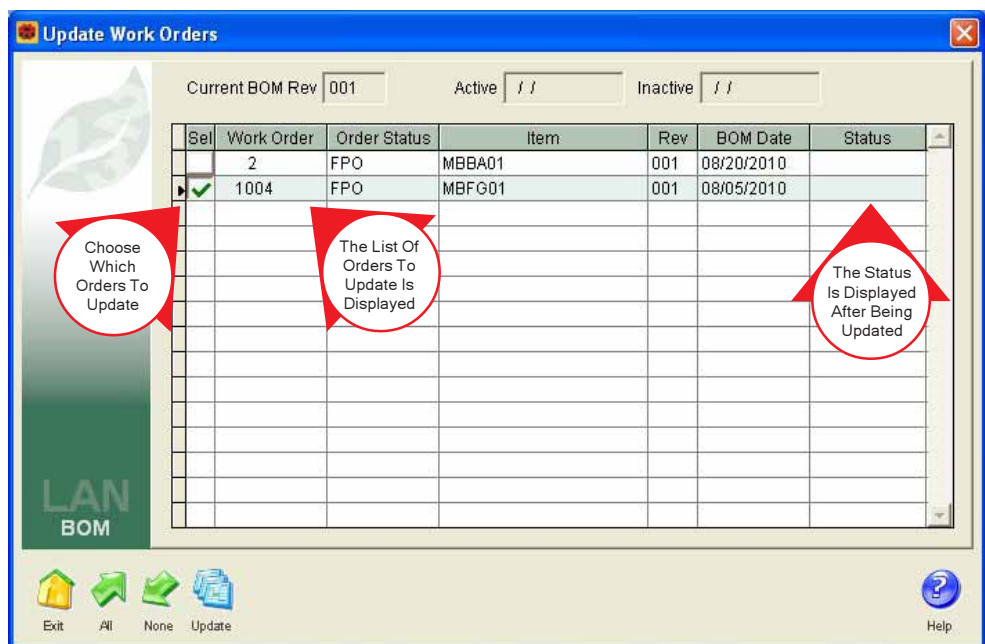
Update Work Orders - Introducing a new function designed to allow the material list on a work order to be updated after a bill of material has been changed!

The process is started by going to the bill and revision level that has changed and selecting the Update button. The *Update Work Orders* screen shows a list of work orders that use that BOM to create their material list. All orders that are affected by the bill change and have not been completed are eligible. Choose which orders to update on the screen and select the Update button.

If a new item has been added to the bill, it will be added to the material list on the work order.

If an item quantity has been increased, it will be increased on the work order.

If an item quantity has been decreased, it will be decreased on those work orders where the unused quantity to be issued is equal to or greater than the change on the bill.



Update Work Orders from Revised Bills of Material

If an item has been removed from a bill, its quantity on the work orders will be reduced to zero (0) or the used quantity if the used quantity is greater than zero (0).

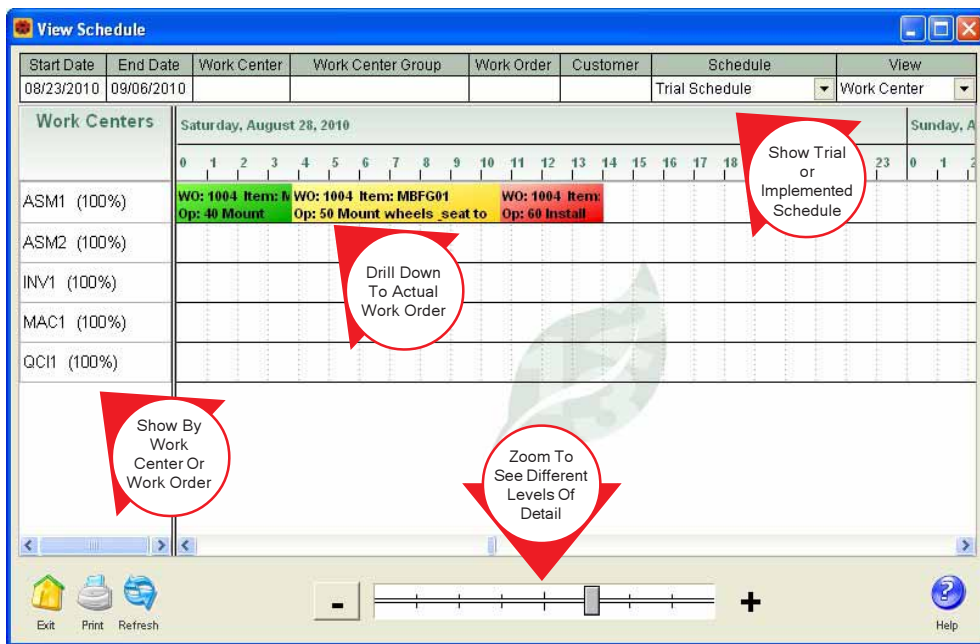
In each case the appropriate allocations will be adjusted.

BOM to Work Order Comparison Report - The purpose of this report is to compare the list of components on the bill of material to the material list attached to a work order. Items marked in blue have been added to the work order material list and items marked in red have been deleted. Quantities have been adjusted as indicated on the report. The Status column on the report indicates if an item has changed on the BOM, been deleted or is unchanged.

Revision Comparison Report - Use this report to compare a list of components on a BOM revision to another revision.

Revision Note Field - A memo field to enter revision notes has been added to the bills of material. Each note can be easily stamped with the user, the time and the date.

View Schedule - Now you can see the schedule for your work orders and work centers graphically laid out on a screen with bright colors and drill down information! Zoom in for hour-by-hour details or zoom out for a weekly or monthly overview. Double click on any step and display the original work order document. Limit the schedule to a range of dates, a work center, a customer or a work order. View either your trial schedule or the schedule that has been implemented.



Graphically View Schedule!

This new graphical view will give you an easy to understand way of seeing how jobs are being processed through your shop or how your work centers are being utilized.

Fetch Toolbar - This new toolbar complements the Fetch retrieval tool by allowing you to save shortcuts for up to six of your favorite searches!

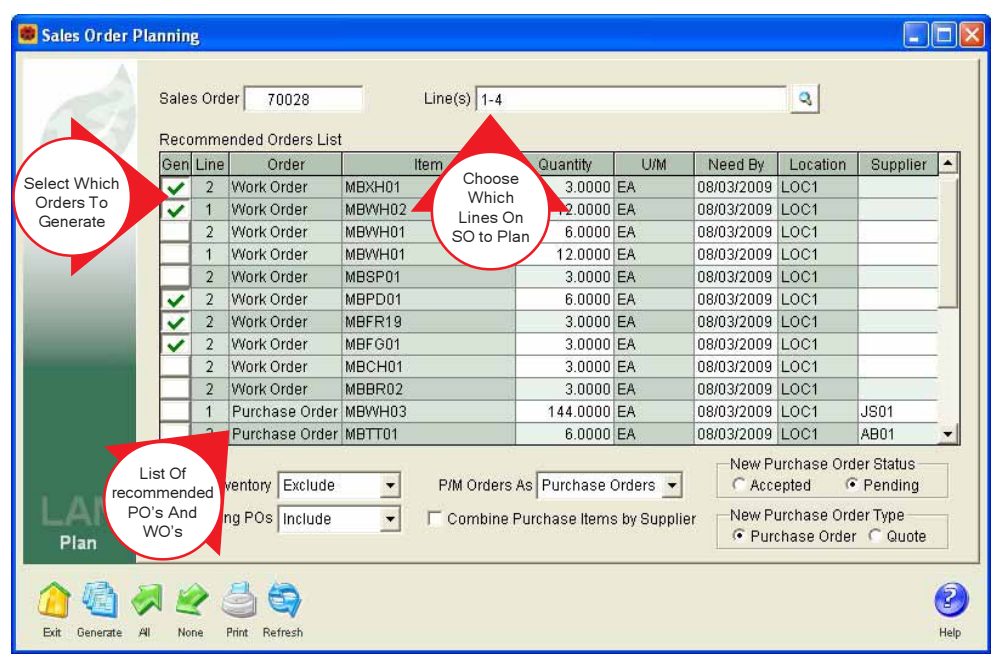
Print Browsers - The new Print button on a browser will instantly compose a report to print the information listed on the screen!

Security by Company - User security has been enhanced by making it company based! This means that a user's access to individual companies can be controlled. Only the companies they are authorized to open are shown on the company menu. Access to individual screens, reports and functions can be set for one, some or all companies.

Sales Order Planning - The purpose of Sales Order Planning is to allow you to select a sales order and run Plan for the purchased and manufactured items on that order. The result is a list of recommended purchase and work orders for all the required components on the sales order line items including the items themselves. From this list you can automatically generate the required orders. Current stock can be excluded so that you can peg orders to specific sales orders.

Miscellaneous Fields - Three miscellaneous fields have been added to work orders. Each field can be easily named and customized to enter text, date or numeric information.

Automated Email - Email automation has been added to the product. For example, an email can be triggered by a version change on a bill of material. The emails are



Run Material Planning For Specific Sales Orders And Generate PO's And WO's

designed to be automatically sent to the staff in your company. You can also embed the type of document and its ID along with the revision number and the date of the document in the email's subject line and in the body of the text.

The screen supporting emailing work orders has been improved to take advantage of the new email automation rules.

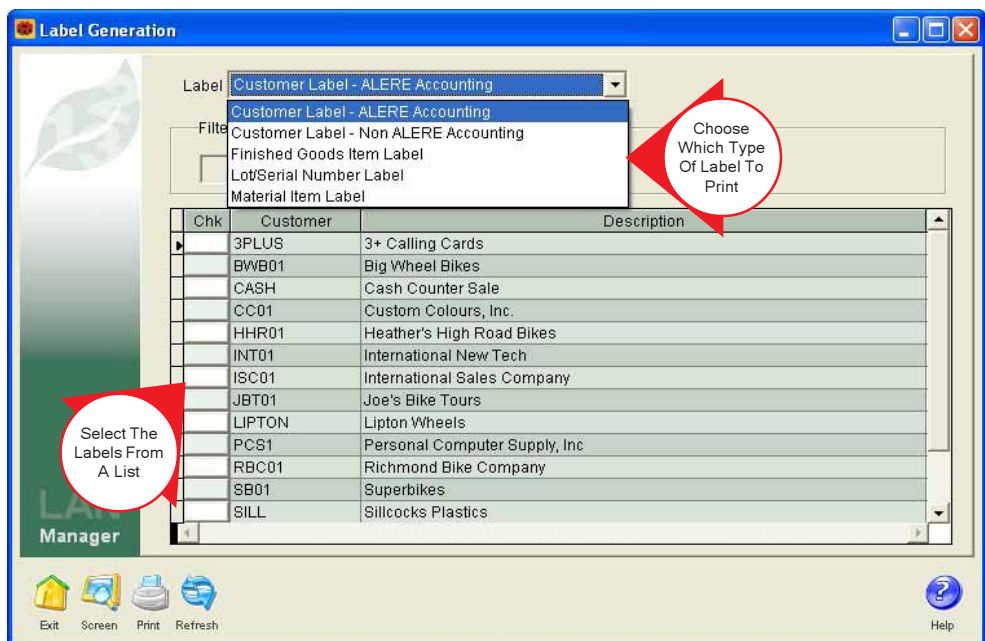
Code Definitions - In the Manager module a new menu option for Code Definitions has been added. This is where text for emails and miscellaneous fields are defined.

Cost Rollup - An option to update the standard cost for an item's inventory master record has been added to the process whenever the standard cost for a specific location is being updated.

Finished Good Costing - A default method for costing finished goods can now be set for each company. In addition to the past standard of calculating the cost based on standard costs, you can now choose to use average costs or the actual costs of the material issued from inventory.

Label Generation - Labels for customer mailings, finished good information, material items for work orders, and lot/serial numbers with item information and bar codes can now be easily printed. A built-in modification tool enables the label layouts to be customized.

Route Step Schedule Control - The ability to control which route steps not to include when scheduling has been added. The steps can be flagged on work orders, master routes and even at the operation library level. This permits you to exempt steps that are purely informational, for example, or steps where material is being issued from inventory and not taking up shop floor resources.



Print Labels For Items, Customers, Finished Goods And Lot/Serial Numbers!

Errors in Schedule - The list of errors can now be sorted by the order number, the work center, or the error number.

MRP Grouping - A sequence number field has been added to the *MRP Grouping* screen to control the precedence order in which locations are used for the *Pick List* report.

Contact Info - The supplier field browser that is available when generating purchase orders now contains contact names and phone numbers to make getting information easier.

Improved Work Order Inquiries - The columns on the *Work Order Inquiry* screen can now be sorted by clicking on the column title. In addition, the description of the item, how many are on hand in inventory and how many are on orders is displayed on the screen.

Plan Errors - An Error button added to the *Plan Order* screen will display the *Recommended Orders* report showing the recommended manufacturing and purchase orders that have been found to have errors.

Unsaved Changes - Now when you choose to exit a screen where there are unsaved changes, a screen listing those changes can be displayed by choosing to edit!

Print New Features - A PDF of the *New Features Brochure* can now be viewed and printed from the *About ALERE* screen by clicking on the New button.

License Agreement - The ALERE license agreement can now be printed from the *About ALERE* screen.

DSN Names/Connect Strings - On the *Company Defaults* screen, the DSN Names and Connect Strings are displayed and can be edited when you are integrated with VAM SQL.

Report Changes - Numerous options have been expanded or added to reports including the following:

- The *BOM History of Revisions* report in the BOM module has new options that allow the report to include single revision BOM's and to include revision notes.
- The *Logins* report in the Manager module allows the report to be sorted by company.
- The *MRP* report in the BOM and Plan modules can now identify pending orders to make it easier to see those orders which have not yet been released. In addition, two new bucket choices have been added to allow you to filter the report to see only those weeks or months which have quantity changes.
- The *Push/Pull* report in the Plan module has an option to include those orders which are pending. You can also set the date on which to end the report.
- The *Net Trial Requirements* report in the BOM module has a new option to include pending orders in the calculation of material availability. You can also choose to order the report by item, by purchased items then manufactured items, or by manufactured items then purchased items.
- The *As of WIP* report in the Cost module has a new option to include work orders that have not yet accrued any value.
- The *Pick List* report in the Order module now has an option to order the report by item number or by location.
- The *Costed BOM* report in the BOM module will now do calculations based on the cost of standard quantities of components or the custom quantities.
- The *Time Analysis* report in the Route module now provides information on how many work orders make up each group and how many finished goods were produced.

User Rights - New user rights have been added as follows:

- **BRCP** BOM Revision Comparison Report
- **BRWP** BOM to Work Order Comparison Report
- **OFCP** Post to Closed Financial Periods
- **OFRF** Reverse Posting of FG Transactions
- **OLCU** Customer Labels
- **OLFG** Finished Good Item Label
- **OLMT** Material Item Label
- **PMSO** Sales Order Screen Planning Screen
- **SMVW** View Schedule Screen
- **WSCD** Code Definition Screen
- **WSEM** Email Automation Rules Screen
- **WSLB** Label Generation Screen
- **WSML** Label Modification



769 Youngs Hill Road, Easton, PA 18040-6726

Phone 610.258.5161 Fax 610.258.6217

Visit our web site at:

www.tiwcorp.com