



New Features in shopLink v2.0!



AccountMate
Software Corporation

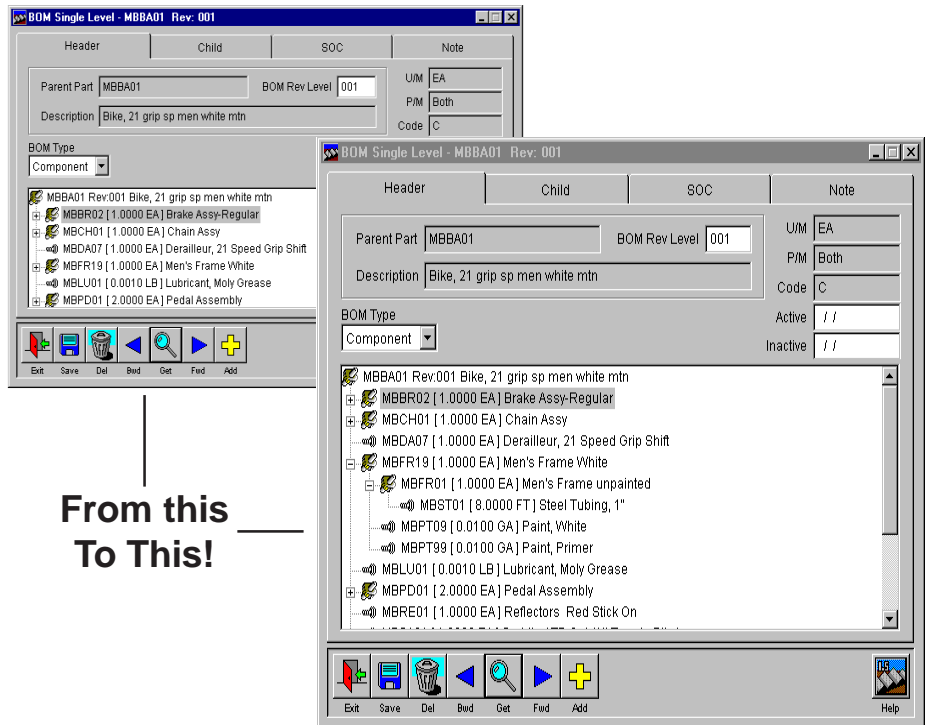
AccountMate VAM/LAN 5.0 Links! - The TIW **shopLink** package now integrates seamlessly with AccountMate's LAN accounting system. Install **shopLink**, answer a couple of straightforward questions and the links are established instantly!

Founded in 1984, AccountMate Software Corporation is an award-winning developer of integrated accounting solutions. AccountMate product lines offer quality financial solutions. AccountMate Software currently has over 120,000 installations serving over 200 industries worldwide and is designed for businesses from start up to divisions of Fortune 1000 corporations.

Dynamic Screen Sizing - The ability to click on a screen and dynamically size it has been added to those screens that would most benefit from this great feature! List boxes are resized and fields are aligned automatically as the screen is dragged larger or smaller! This is an excellent way to enlarge and display important BOM's and to see the indented structure in detail several levels down. On the Material Orders screen, stretching the Material tab allows you to easily see at a glance large lists of material required for the job!

Since **shopLink** supports MDI, multiple screens can be opened and each sized according to your need! See the material orders and the matching bills of material side-by-side! The resized screens revert to their original settings upon exiting.

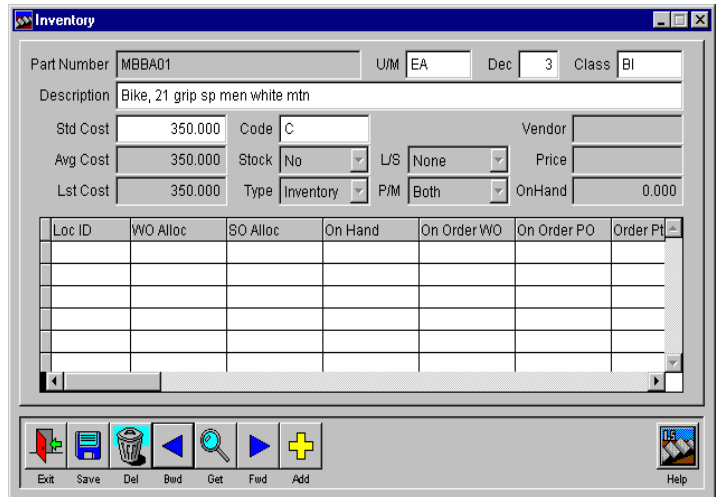
Dynamic screen sizing is the best way yet to construct and maintain BOM's!



From this
To This!

BOM Improvements - The manner in which the forward/backward buttons work on the BOM Single Level screen has been substantially improved. Each click of the button now moves to the next or previous part number, showing only the current revision. Double click (or use the F2 key) on the **BOM Rev Level** field to pop up a *Get* screen and locate a specific revision of the displayed BOM. Adopting this method of moving between BOM's and finding revisions has improved the speed at which bills are saved.

Enhanced Inventory - The inventory capabilities have been expanded to strengthen **shopLink's** ability to operate independently of an accounting system. New item numbers, key characteristics, and inventory locations can now be created and maintained while linked or unlinked to an accounting package! A typical key application for this enhancement is the rapid creation of item numbers for use in bills of material, without leaving **shop-Link!** The new item numbers are simultaneously entered in the inventory of any linked accounting system. This means that during BOM creation, you can use the MDI (Multiple Document Interface) to open the *Inventory List* screen and enter a new part number and then return to the BOM right where you left off!



Adjust Finished Quantities - An **Adjust** button has been added to the *Material Order* screen on the *Status* tab that allows the quantity being manufactured to be changed before posting the finished goods to inventory! Now, when you make more or less with the material allocated for the job, you can post the correct quantity to inventory with one easy step!

Period Closing Screen - An easy to use period closing screen has been added to support accounting systems that require **shopLink** to have a closing process for end of the period reporting!

Improved Delete Old Orders Function - No more two step process to get rid of completed orders! The *Delete Old Orders* function now packs and removes closed orders in one step!

Company Reindex Utility - A utility has been designed and included with **shopLink** that makes it easy to automatically delete and rebuild company indexes! Called WSREINDX.EXE, this executable utility is located in the program directory and runs outside of **shopLink**. The reindex utility deletes and rebuilds indexes based on the WSINDEX table. Thus, new indexes and changes made when customizing **shopLink** are automatically included when added into this table. The WSREINDEX utility is great way to make it easy to recover from damaged indexes without even starting **shopLink!**

769 Youngs Hill Road, Easton, PA 18040-6726
 Phone: 610.258.5161 Fax: 610.258.6217 email: info@tiwcorp.com

Visit our web site at:
www.tiwcorp.com

