



# New Features in shopLink v4.0

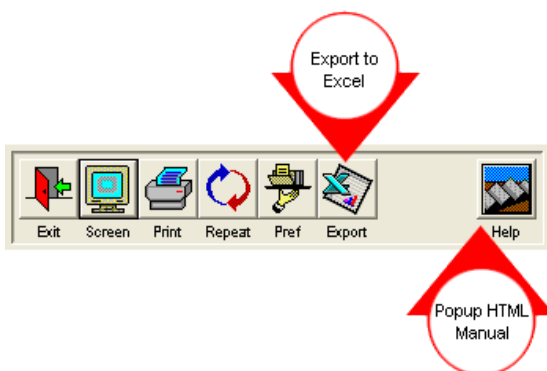
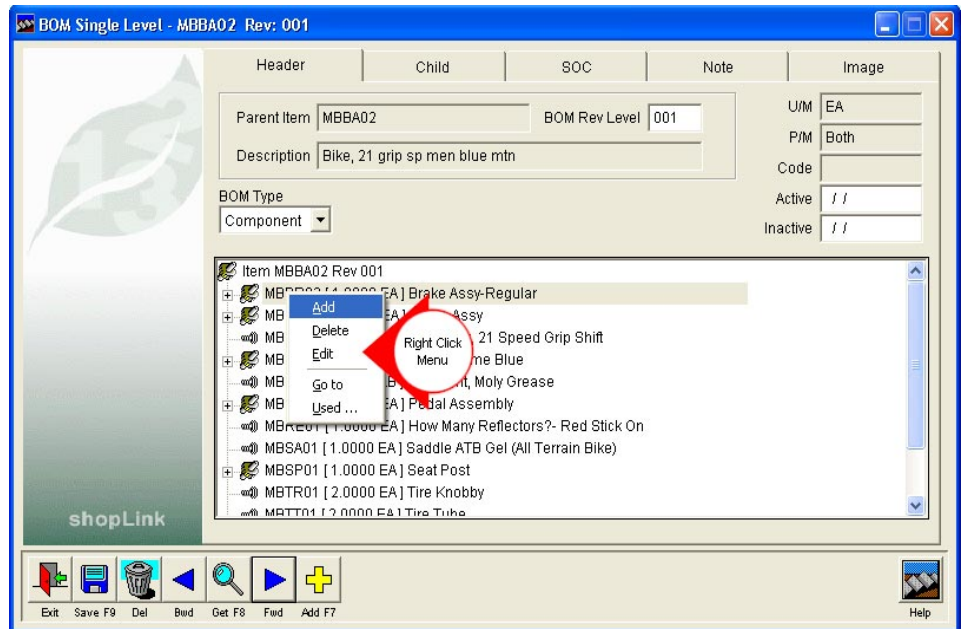
**New Screens** - The look and feel of the ALERE Accounting package has been brought to shopLink. The screen sizes have been increased to 800 x 600 which makes room on the grids for more information, easier navigation and a cleaner layout. ALERE and shopLink have always been seamlessly integrated - now they look it!

**BOM Right Click Construction** - Now you can construct complete indented bills of material on one screen simply by right clicking on the Treevision™ BOM structure. A menu allows you to add, edit or delete items on the bill and see the bill built graphically on the screen. The options also allow you to go to any related bill and even find every bill in which an item is used. Lower level bills are automatically generated as the indented bill is created.

**Print Range of Costed BOM's** - The *Costed BOM* report can now be printed for a range of item numbers. Simply enter a beginning item number and an ending item number, and a costed bill will be printed for every item in that range.

**MRP Report Enhancements** - Several improvements have been made to the MRP reports.

- An option has been added to exclude material supply anticipated from purchase and material orders that have not been received.
- The reports can be run for partial item numbers.
- Units of measure for quantities are displayed on the MRP *Bucketless* report.



**Enhanced Open Orders Report** - The report can be run for a specific item number or for partial item numbers.

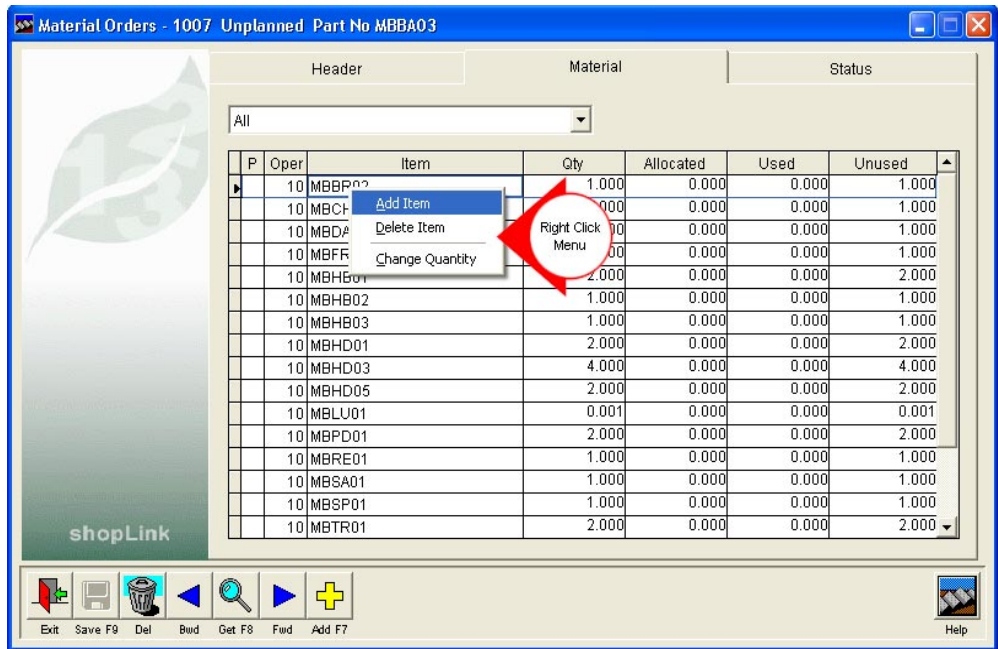
**Excel Export** - An *Export* button has been added to all reports that will export the raw data directly to an Excel file. The data is not formatted like a report. Instead, the full report details are placed into rows and columns. This gives you more control over the information in the spreadsheet. The file can be assigned a name and a data path that may be entered when exporting the report data.

**Graphic Report Layout** - Report layouts have been reworked to use true type fonts and to incorporate a cleaner layout.

**Live Edit of Material List** - A simple right click on any item on the material list displays a menu which will allow you to change the quantities of the items on the fly, add new items to the list, and delete unused items from the list. Inventory allocations are automatically updated.

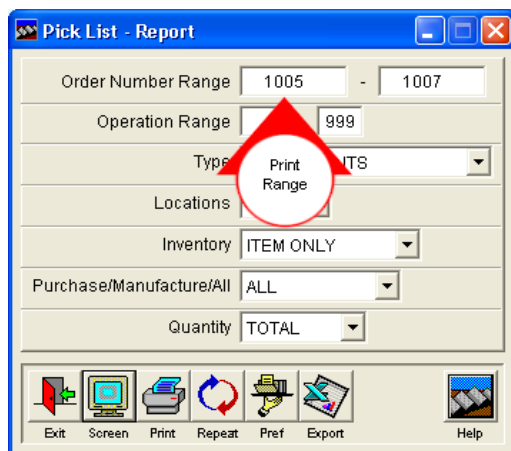
Being able to edit the material list, even after the order has been released, greatly expands the abilities of shopLink.

Jobs do not need a prepared bill of materials to get started. Just add an order and release it to get it started. Then adjust the material list as the work progresses to suit the requirements of the job!



You can even leave a job open by starting with a nominal build quantity. Then increase the quantity being made and update the material list with the additional components that are required. All the while keeping track of it by running the MRP reports!

**Inventory Hyperlinks** - Get instant access to inventory information by double clicking on any item on a material list! The *Inventory* screen is displayed, in a screen-on-screen fashion, directly on top of the material order screen. When the inventory screen is exited, you are placed back on the material list where another item may be selected.



**Print Range of Pick Lists** - Simply enter a beginning order number and an ending order number and a pick list will be printed for every order in that range. Entering only one order number in the first field limits the report only to that order, thus eliminating the necessity to enter the same order into the second field.

**Enhanced Pack and Reindex** - The process of packing and reindexing has been expanded to make tables selectable by module or by table.

**Report Icons** - Now you can automatically add company logos to the shopLink reports by adding the name and path of the icon to the *Company Defaults* screen! Image formats that can be used are BMP, GIF and JPG.

**Compatibility** - The shopLink package has been updated to include compatibility with ALERE v3.2 and Pro v7.2 and older versions. Users of shopLink may upgrade to WorkShop without any conversion process. An order started in shopLink can actually be completed in WorkShop.

**General Environment Enhancements** - A couple of product-wide enhancements have been made to shopLink.

- Tabbing past the last field on a screen now defaults to the **Save** button rather than the **Exit** button.
- Browser search functions now default to "\$" rather than ">=".

**New HTML Manual** - The manual has been enormously improved and now works like a web site. It can be started from within the product by clicking on the *Help* button on any screen.

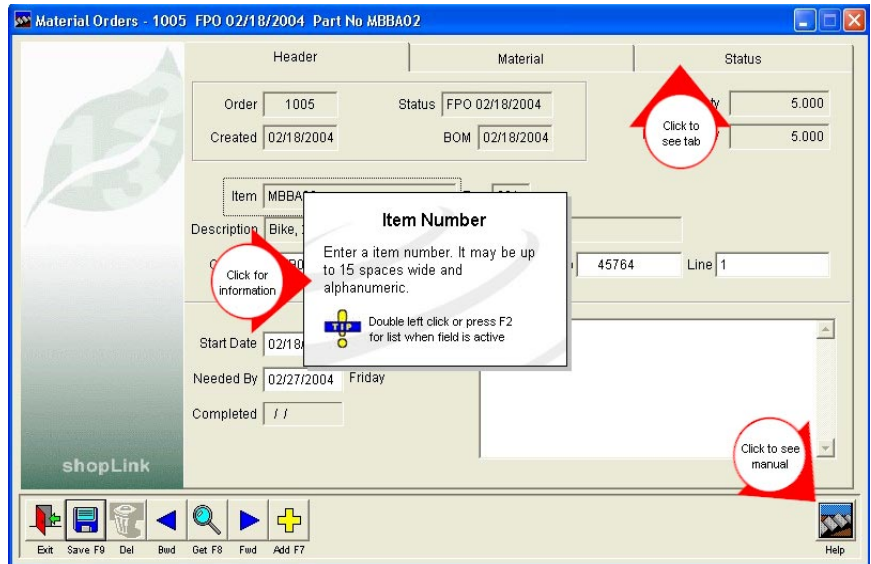
The left window pane in the manual contains the contents, an index, and a search function.

A *Product Tour*, and a *Quick Start Guide* are also included.

The main body of the manual is arranged to match the menu selections in the product. This makes it easy to navigate and find the particular section you are looking for.

As with the HTML manuals for ALERE and WorkShop, the actual shopLink screens are included in the manual. Simply use your mouse to point and click on the screens to find out about fields, columns, options, etc. An explanation pops up with the information. Even the screen tabs are active and allow you to display them with a simple click!

A handy reference guide that lists all the keyboard shortcuts can be printed out!





769 Youngs Hill Road, Easton, PA 18040-6726  
Phone 610.258.5161 Fax 610.258.6217

Visit our web site at:

**[www.tiwcorp.com](http://www.tiwcorp.com)**

Copyright © 2004 by TIW Technology, Inc. ALERE, Treevision,  
WorkShop, and the TIW logo are trademarks of  
TIW Technology, Inc. All rights reserved.