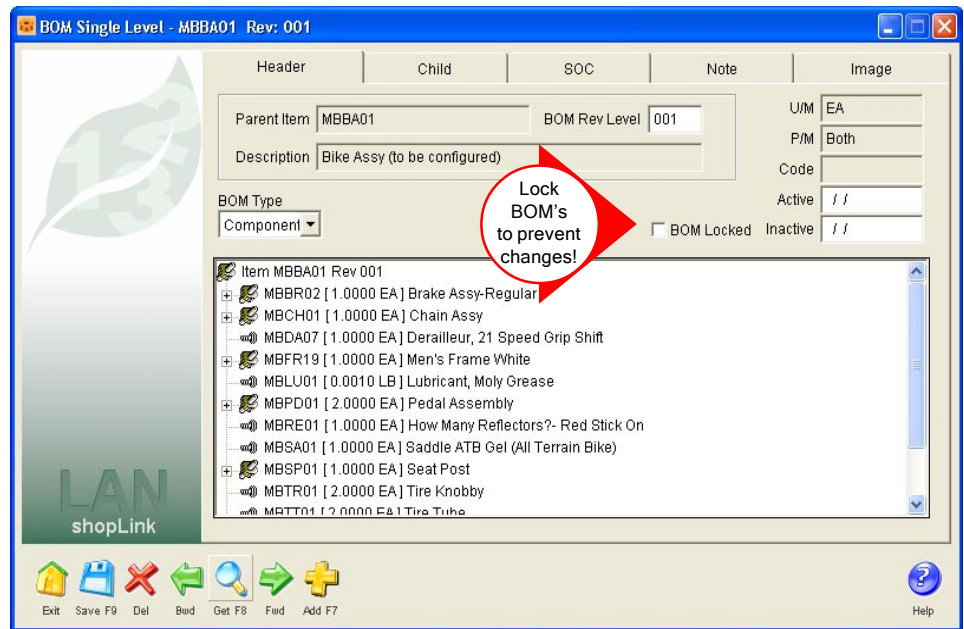




New Features in shopLink v4.1

BOM Lock - Now BOM's that have been created can be locked so that changes cannot be made without proper security rights! This increases your control over who can make changes to bills of material! Avoid inadvertent changes that can cost you thousands of dollars in time and inventory!

Mass Issue & Return Transaction - The transaction that is used to issue all material has been expanded to return to inventory any material with negative quantities at the same time! Think of it as a way to preprogram into the bill of materials used by the material order, a method for returning end-, co- and by-products automatically to inventory!

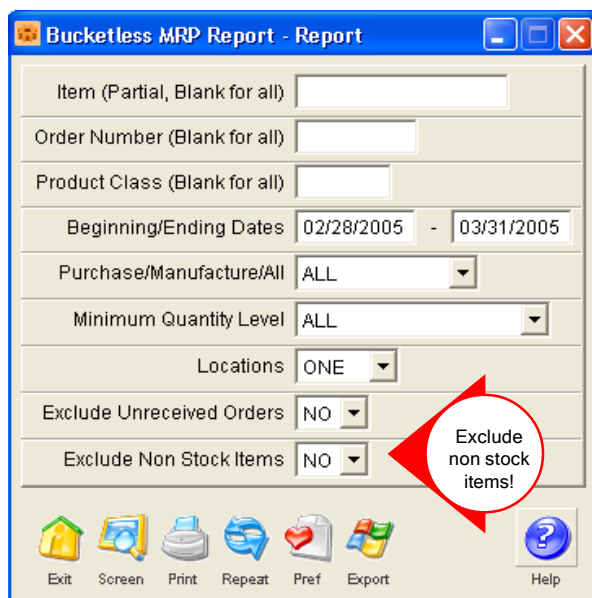


Key Changes - A key change utility has been added. Changes may be made for customer, item number and location. What is particularly unique about this new utility is that it allows you to merge information, in addition to simply changing records. For example, one customer can be merged into another!

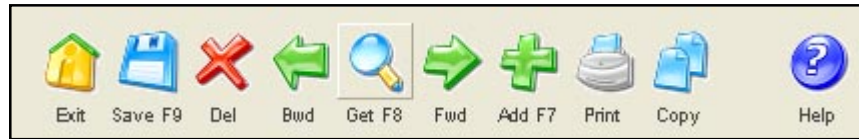
New MRP Option - Non stock items can now be excluded from the MRP reports! This option is especially useful for companies that manage large quantities of floor stock that are automatically replenished by outside suppliers, because it allows the MRP report to focus on only those items that need to be reordered.

Logins Report - This new report provides an easy way to list all the access rights a user has throughout shopLink!

Pick List Report - The report can be filtered by product class and inventory by location/zero stock. It can even create a list that discerns between phantoms in stock and components of phantoms in stock!



Appearance Enhancements - New XP-style icons are now the standard for screen buttons. The “Classic” buttons may also be used with a simple change.



Another subtle but important appearance enhancement is that every other line on grids is now a light green to make it easier to read long lists.



769 Youngs Hill Road, Easton, PA 18040-6726
Phone 610.258.5161 Fax 610.258.6217

Visit our web site at:

www.tiwcorp.com

Copyright © 2005 by TIW Technology, Inc. ALERE, Treevision,
WorkShop, and the TIW logo are trademarks of
TIW Technology, Inc. All rights reserved.