



## New Features in shopLink v5.0

**Data Browser** - TIW introduces a powerful new browser! Only by using it yourself will you understand the scope of the features it offers! Here are some of the highlights:

- Typed in search items are remembered and can be retrieved from a pull down window!
- A feature called *Persistence* keeps the browser displayed on the screen while you drag and drop the records that you would like to see!

The screenshot shows the 'Data Browser' window with the following features highlighted:

- Two criteria and/or searches:** Points to the search criteria dropdowns.
- Multiple word and phrase searches:** Points to the search string input field.
- Stores last ten searches:** Points to the search history dropdown.
- Arrange column positions and size:** Points to the column headers in the table.
- Click to sort column:** Points to a column header in the table.
- Set and save preferences by user:** Points to the 'Pref' button in the toolbar.
- Drag and drop to see multiple records:** Points to a row in the table.
- Right click menus:** Points to a context menu over a table row.

Item	Rev	Active	Description
MBBA01	001	Yes	Bike Assy (to be configured)
MBBA02	001	Yes	Bike, 21 grip sp men blue mtn
MBBA03	001	Yes	Bike, 21 grip sp men red mtn
MBBA04	001	Yes	Bike, 21 grip sp men black mtn
MBBA05	001	Yes	Bike, 21 std sp men white mtn
MBBA09	001	Yes	Bike, 18 std sp men white mtn
MBBA13	001	Yes	Bike, 12 std sp men white touring
MBBB01	001	Yes	Bike, 21 grip sp women white mtn
MBBB02	001	Yes	Bike, 21 grip sp women red mtn
MBBB03	001	Yes	Bike, 21 grip sp w...
MBBB04	001	Yes	Bike, 21 grip sp w...
MBBB05	001	Yes	Bike, 21 std sp wc...
MBBR01	001	Yes	Brake Assy-Racing
MBBR02	001	Yes	Brake Assy-Regular
MBCH01	001	Yes	Chain Assy

- Right clicking on an item in the browser gives you access to all related information on that item no matter where it is located in shopLink!
- Do advanced searches using any combination of multiple criteria! Including searching within strings of text!
- Column order, initial search field, number of lines in the grid, columns widths, and more can all be customized by each user without any coding!
- Left click on any grid column to sort it in ascending or descending order! Right click on the header to search on that column!
- Drag column positions and sizes and then save them by user!
- Drag and drop information from any field to enterable fields on the screen!

- A right click on the silver graphic on the browser screen will display the browser key, description, and number of records in the initial and search browse window.
- A right click on the Get button of any screen provides a shortcut to finding a record.

**MRP Options** - New options expand the capabilities of this vital report. You can

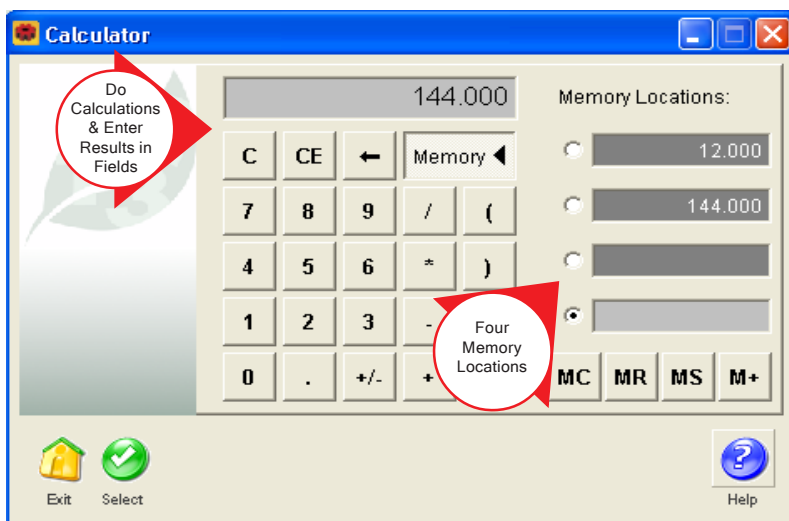
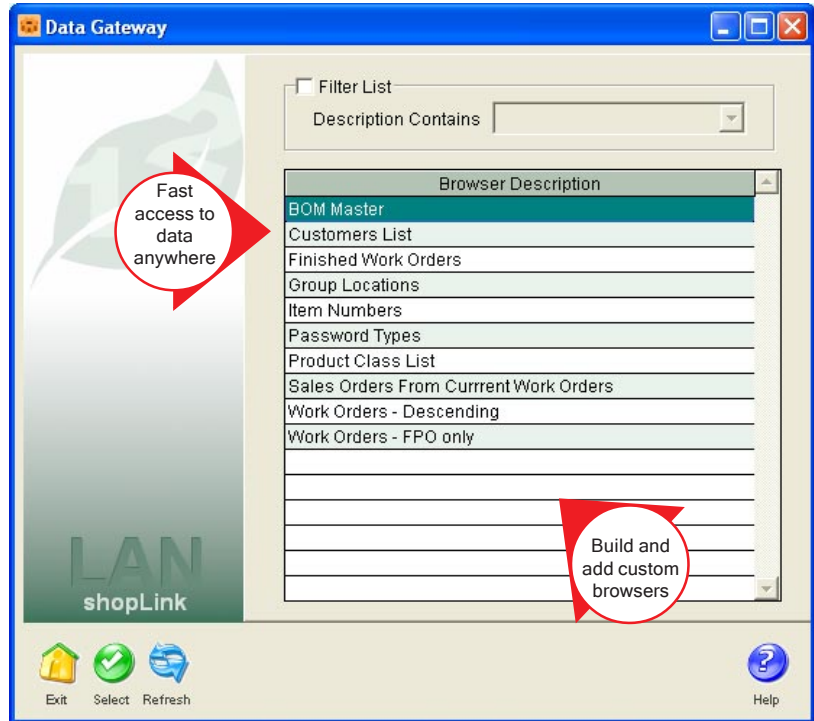
- Include pending purchase orders, sales orders and material orders in the MRP report and test the effects of these unreleased orders.
- Run the report for a specific item number, like ABC, even when it is a subset of a longer number, like ABC01, just by adding quotes around the number.

**Data Gateway** - Now, from one screen, you have easy access to any designated browser in shopLink! Enter or select a key word or text string to filter the list of browsers! For example, type in "ORDER" and a list of every browser that has order information is displayed! Or you can select from a list of key words to narrow the list of browsers!

**Right Click** - Now you can right click in text boxes to perform Windows functions such as cut, copy and paste. In edit boxes, highlight then right click to cut, copy, paste and find!

**Company Defaults** - A new option automatically fills in the **User ID** in the **Authorization** field for use when you release a material order.

**Material Orders** - Quickly start a new material order by copying an existing one using the new **Copy** button. You can then make changes to the order prior to releasing it. The new **Print** button allows you to instantly print the order.



**Calculator** - A calculator has been written to replace the numeric input pad throughout shopLink. Besides all the normal calculator functions you would expect, it includes multiple memory locations and drag and drop. The calculator may also be selected from the main menu bar for when you simply need to do a calculation but not an entry on a screen.

**Pick List Report** - This report has become more flexible with options to print pick lists based on the default material issue locations on the work orders. You can also choose to have all inventory locations and their on hand quantities for each item included on the report.

**Inventory** - Speed up entering new items by using the **Load** button to copy setup information from another item already in inventory!

**Costed BOM Report** - A number of new features expand the capabilities of this report.

- All bills of material for a product class can be costed together.
- Items with no cost can be included on the report.
- You can choose to use the default minimum order quantities from inventory.
- All BOM levels are always rolled up but only the number of levels you specify will be displayed.

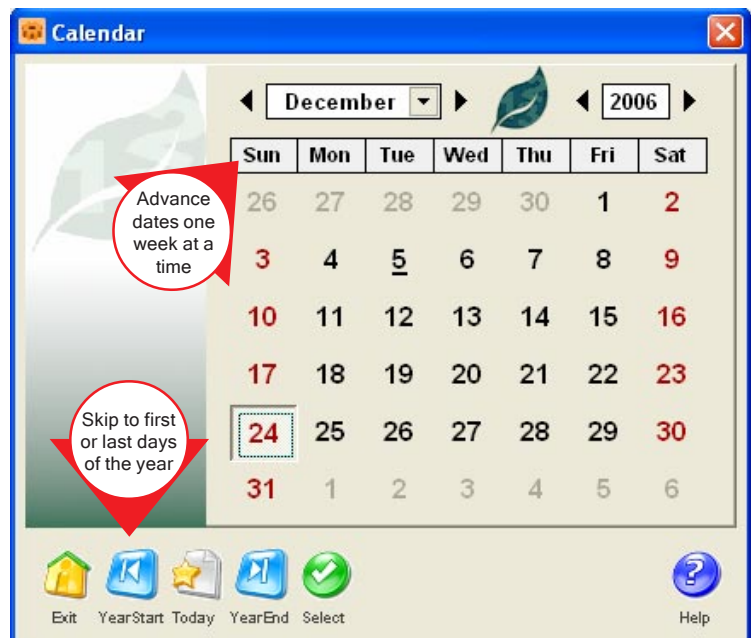
**Mass Replace** - Documentation can now be added to the altered BOM's using a new **Notes** button, which appends anything you enter to the scratch pad memo field.

**Key Changes Expanded** - View a complete history of the key changes that were made within a date range that you enter. A *Print* button will compose a report and send it to a printer. The key change process has been made exclusive, meaning that other users cannot be in the system.

**TIW File Update** - The WSUPDATE routine, which used to be run from the FoxPro command line, has been replaced by TIW File Update. This utility is now a System menu selection. It can be run from within shopLink and offers several enhancements. Advanced users can selectively update tables. There is also an option to print only tables that have been changed during the update process. The system files need only be updated once when multiple companies are being processed.

**Calendar** - An easy to use calendar has been written to replace the native Windows calendar. The month or year can be selected from a combo box or by using forward/backward buttons. Saturday, Sunday, and closed dates are highlighted in red on the calendar to make them more visible. Buttons make it easy to jump to the start of the fiscal year or to the end. Clicking on days of the week that belong to the month before or after automatically moves the focus to that month. Going forward or backward on the TIW calendar in one week intervals is accomplished by right or left clicking on the name of the day of the week.

The calendar has also been added to the main menu under the Windows menu. Dragging and dropping dates can be done when the calendar is called from this menu.



**Maximize Screen** - A single click will maximize most screens to the full size of your monitor! This is perfect for displaying the most number of grid lines or memo information!

**Window Menu Options** - The *Windows* option on the menu bar will display a list of all the open screens you have on your desktop and allow you to select which one to work on! You can also automatically arrange the screens in cascade style or cycle through them one at a time.

**Visual FoxPro v9.0** - This release of shopLink has been designed to run on Microsoft's Visual FoxPro v9.0. The run time included with the software has been updated for VFP9.



769 Youngs Hill Road, Easton, PA 18040-6726  
Phone 610.258.5161 Fax 610.258.6217

Visit our web site at:

**[www.tiwcorp.com](http://www.tiwcorp.com)**

Copyright © 2006 by TIW Technology, Inc. ALERE, Treevision,  
WorkShop, and the TIW logo are trademarks of  
TIW Technology, Inc. All rights reserved.