

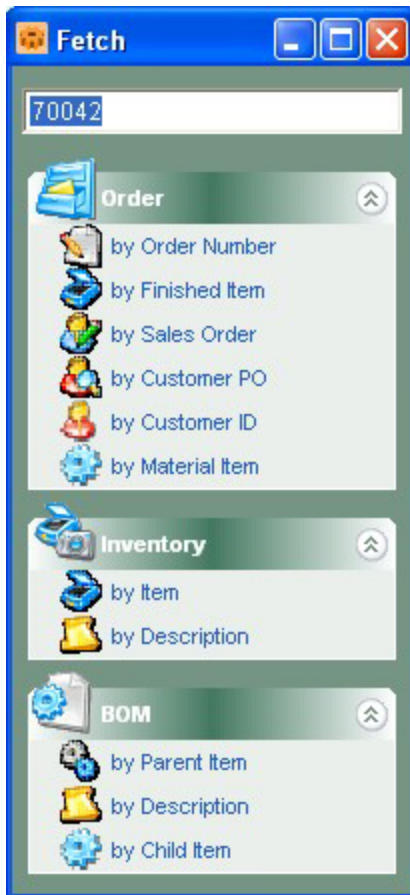
ALERE® Business Applications

NEW
FEATURES

New Features
shopLink
version 6.0

A Review of the New Features
and Changes In this Release

September 2008



Fetch - Introducing a totally new way of getting to information in shopLink!

No matter what you are trying to find - a material order using a customer PO, a bill of material, or a red bicycle in inventory - **Fetch** will do the job quickly and easily!

Fetch is always at the ready! All you have to do is enter a key word or number and click on a link. As you type, a drop down window displays similar fetches that can be selected. Your information is retrieved as soon as a link is chosen.

Say a customer calls and wants to find out what jobs he has in the shop and the status of each job. Enter his company number in **Fetch** and click on the "by Customer ID" link. His material orders are quickly found and displayed. From those orders you can see where they are in the manufacturing process.

It is that easy! Also notice that you did not have to exit the work you were doing or even open another module or screen!

You can set **Fetch** to display automatically on start up or select it from *Window* on the menu bar. **Fetch** can also be found on the *Data Gateway* screen.

Set up **Fetch** just the way you want to use it and then save your preferences so it is displayed that way each time you open shopLink!

Fetch is waiting to play; retrieving information has never been easier!

Print Hot Key - The F12 special function key can be used in place of the **Print** button.

Screen Layout - The material order screen is redesigned to more closely match the ALERE Accounting presentation style.

Inventory Report Options - New options for a range of item numbers, product class, miscellaneous code, and stocking status have been added to the *Inventory* report.

Trait/Lot Issuing - When linked to ALERE Accounting, the ability to issue and receive up to three traits and/or expiring lots has been added to shopLink.



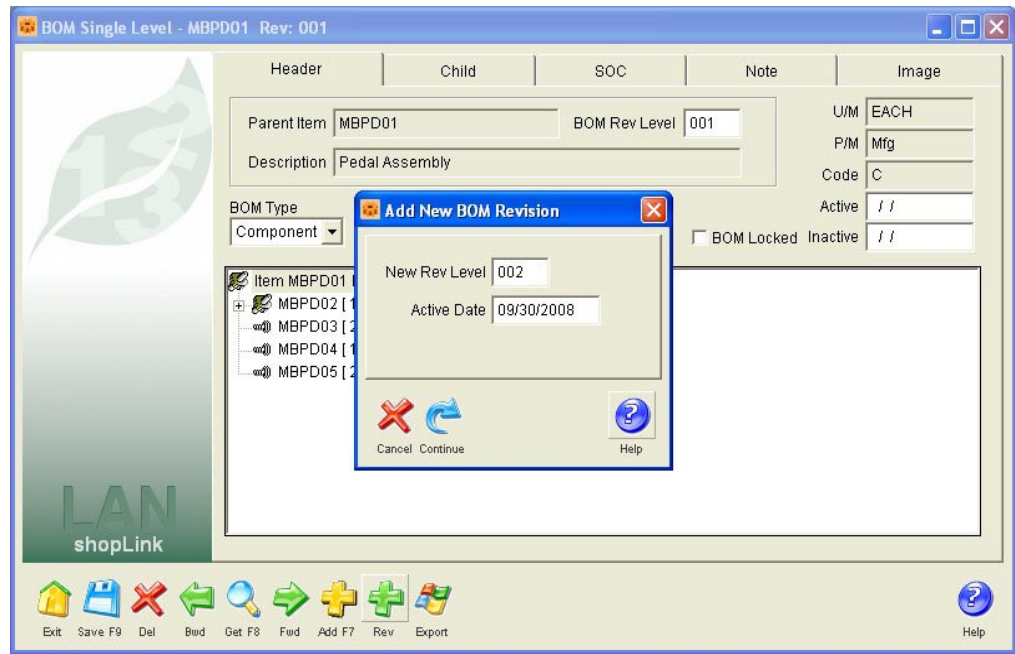
New Options for the Parts Inventory List Report

BOM Revisions -

Now bill of material revisions can be created more easily by using the new **Rev** button on the *BOM* screen. The previous revision is automatically set to become inactive the day before the date the new revision is to be activated.

Customer PO

Lookup - The browser for material orders can now be used to find orders by customer PO. When the browser is displayed, scroll right to the *Customer PO* column and right click on the title of the column. Type in the purchase order number and click on the **Search** button. That is all there is to it!



Easily Manage BOM Revisions

Company Defaults - New items on the *Company Defaults* screen include:

- The capabilities of the *Language* option have been broadened and changed to *Global Lingo* and *Local Lingo*. In general, *Global Lingo* permits changes to be implemented to all users and *Local Lingo* pertains to individual users.
- There is an option to set the key combination for the use of web and email links.

BOM Export/Import

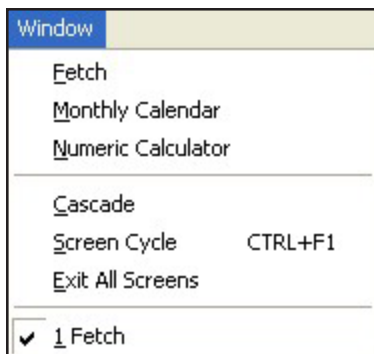
Single level bills of material can be exported to Excel using a convenient button on the *BOM* screen. A separate import utility allows bills to be imported into shopLink from Excel.

	A	B	C	D	E	F	G	H
1	itemparent	rev	active	inactive	bomtype	itemchild	qty_assy	findno
2	MBPD01	001	/ /	12/31/9999	1	MBPD02	1.0000	1
3	MBPD01	001	/ /	12/31/9999	1	MBPD03	2.0000	2
4	MBPD01	001	/ /	12/31/9999	1	MBPD04	1.0000	3
5	MBPD01	001	/ /	12/31/9999	1	MBPD05	2.0000	4
6								

Import and Export Bills of Material with Excel

Inventory Hyperlink

Display inventory information on items on the *Work Order Material* tab by just double left-clicking on them! In addition, an inventory option has been added to the Treevision right-click BOM menu for a child component.

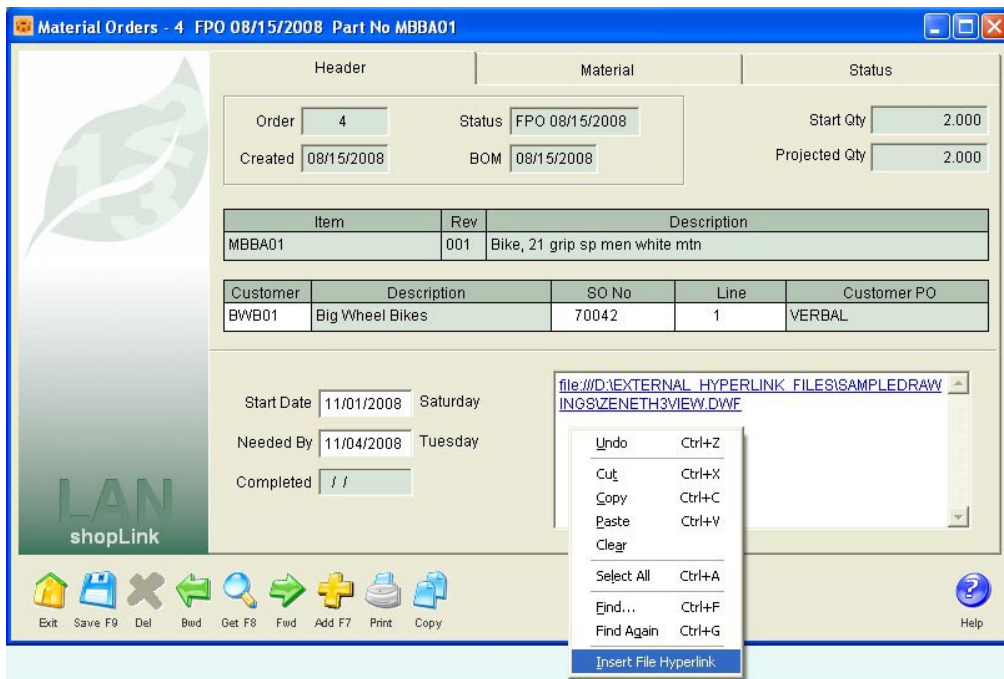


Exit all screens with one click

Print Login Options - A **Print** button has been added to the *Login Options* screen that will automatically print the *Logins List* report.

Order Print Button - The **Print** button on the material order screen now allows the printing of the *Traveler* report, the *Pick Ticket* and the *MRP* report. You can specify the quantities to be printed for each report. The *MRP* report is run for the item being produced and for all the components on the material list.

Close Screens - A new Window menu option called *Exit All Screens* will automatically close all open screens on the desktop.



Insert Hyperlinks for CAD Drawings, Web Sites, Email, Documents, Spreadsheets and More

External Hyperlinks

- Place key customer email links directly in material orders! Tie a company's web site to critical internal documents! View CAD drawings related to bills of material! Link Material Safety Data Sheets and Excel spreadsheets to material orders! In fact, any file that can be run on your computer can be accessed!

Do all this and more using the powerful external hyperlinks that can be easily integrated into shopLink.

Sample Company - After installing shopLink, when no companies have yet been established, you can choose to automatically setup a sample company. This company can provide a place to learn about the features in shopLink and to do training.

New Companies - When adding a new company to shopLink you now have the option to import data from another existing company. This allows the preparation work that needs to be done before starting to use a company to be pre-loaded and modified to reduce implementation time.

Partial Entries - Report options that accept partial entries can be made to perform an exact match by following the entry with a \$ sign or by placing quotes around the entry.

Report Improvements - General improvements that have been made to reports:

- Report option combo boxes now use Proper rather than Upper Case.
- The Customer PO number has been added to the Traveler report.



769 Youngs Hill Road, Easton, PA 18040-6726

Phone 610.258.5161 Fax 610.258.6217

Visit our web site at:

www.tiwcorp.com

Copyright © 2008 by TIW Technology, Inc., ALERE, Treevision,
and the TIW logo are trademarks of TIW Technology, Inc.
All rights reserved.