

**NEW FEATURES**

**New Features**  
shopLink  
version 6.5

A Review of the New Features  
and Changes In this Release

December 2009

**PDF Reports** - Every report in shopLink can now be turned into a PDF file to make it readily available to share or add to an email. The PDF files are logically named to make it easy to identify them. Even reports that are printing multiple documents, a range of material orders for instance, can be automatically turned into multiple PDF files. It is as simple as clicking on the **PDF** button on the report option screens!

**Item Descriptions** - The export of the *Costed* or *Indented BOM* reports to Excel spreadsheets now includes descriptions for inventory items.

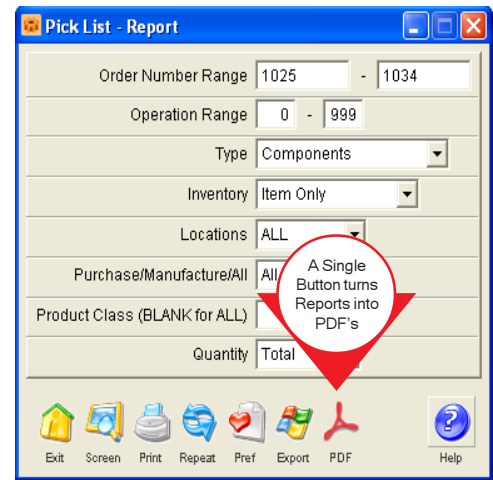
**Mass Key Changes** - Large numbers of key changes can be accumulated on an Excel spreadsheet and then imported and processed all at one time. This is especially useful when making changes that are far reaching, for example to a part number policy.

**Extended MRP Report Options** - A new option has been added that allows the report to be filtered for partial or full item types.

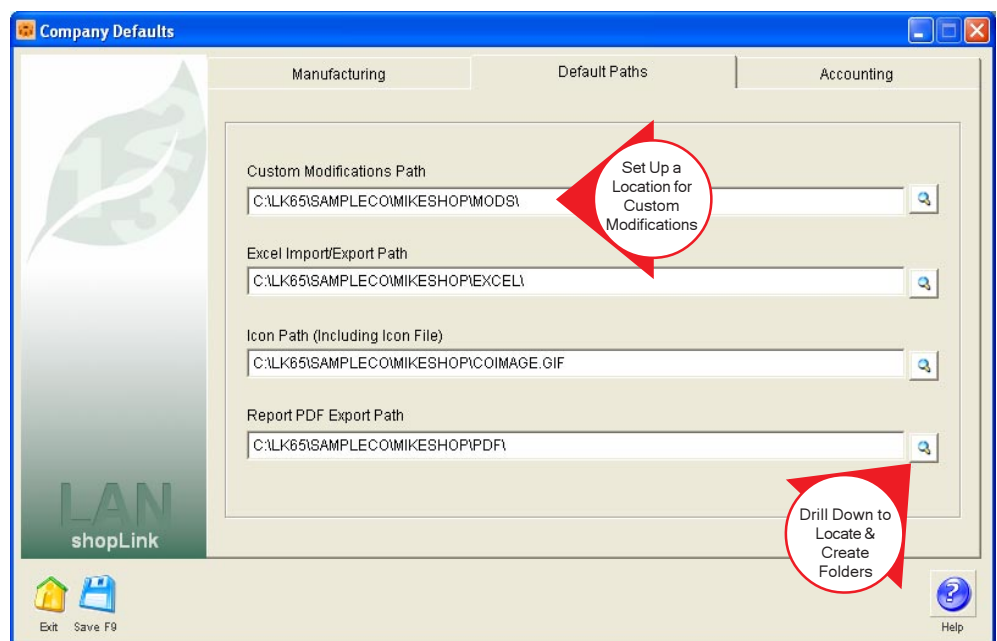
**Company Default Paths** - A new tab, called *Default Paths*, has been added to the *Company Defaults* screen.

This tab allows paths to be set up as defaults defining where custom modifications reside, where the company icon can be found, where reports export their data to Excel files, and where reports will place the PDF files that are created.

**BOM Enhanced** - The description on the BOM screen has been expanded to sixty characters. This matches the width of the field used by inventory in ALERE Accounting.



*Turn Every Report into a PDF Document!*

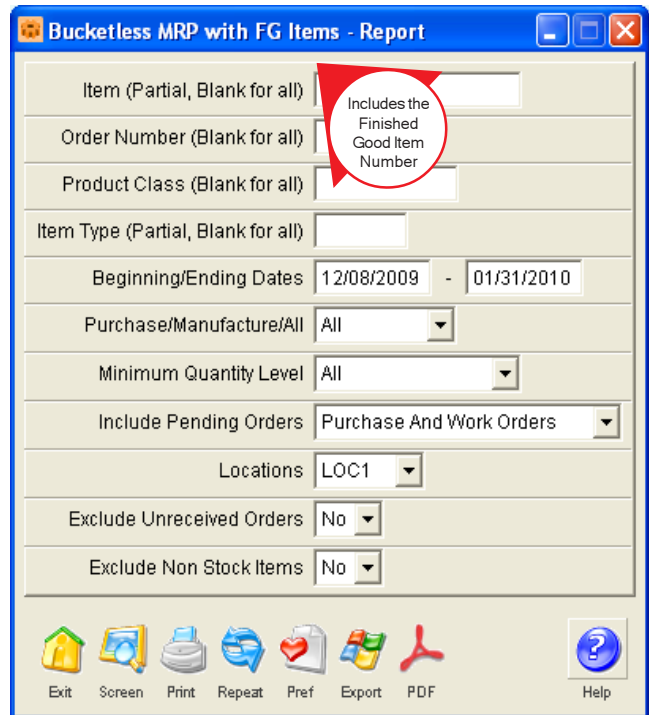


*Company Default Paths Add Flexibility!*

**Calendar Expansion** - The pop up calendar has expanded the number of weeks that are visible from six to eight! This makes it more convenient when searching for dates or moving between months.

**New MRP Report** - The *Bucketless MRP with FG Items* report will include the finished goods item number for components that need to be issued to material orders. Having the finished good item numbers makes it easier to identify the jobs that require them. The report also includes the new filtering option for item types.

**New Installer** - A new installer, which is compatible with 64 bit operating systems, is now used to install and set up shopLink.



769 Youngs Hill Road, Easton, PA 18040-6726  
Phone 610.258.5161 Fax 610.258.6217

Visit our web site at:

**[www.tiwcorp.com](http://www.tiwcorp.com)**

Copyright © 2009 by TIW Technology, Inc., ALERE, Treevision,  
and the TIW logo are trademarks of TIW Technology, Inc.  
All rights reserved.