

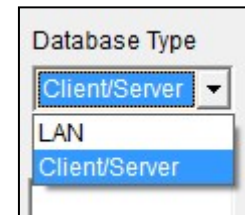
November, 2014

ALERE® Manufacturing **version 10.0**

Client/Server – With this release of ALERE Manufacturing you are receiving a CD that allows you to choose between running a LAN version or a Client/Server SQL based product!

The installation program installs as it always has but it is now your choice when you add a new company!

A *White Paper* has been prepared to guide you through converting a LAN based company into a SQL based one. It is available on the *Downloads* page of our web site at www.tiwc corp.com.



Automatic Step Closing Option - The *Company Default* screen has a new *Options* tab which contains the various options. There is new option for the automatic closing of operation steps when an IP transaction is posted and the quantities equal or exceed the projected quantity. This will also close all preceding route steps.

Push/Pull Automation – Automate the process of making recommended changes to work orders using the new *Order Push/Pull* screen!

Chg	Order	Item	Description	Action	Original	New	Units
	WO 1008	MBBR01	Brake Assy-Racing	Cancel	11/21/2014	12/31/9999	
✓	WO 1007	MBBR02	Brake Assy-Regular	Cancel	11/21/2014	12/31/9999	
	WO 1009	MBCH01	Chain Assy	Cancel	11/21/2014	12/31/9999	
	WO 1010	MBFG01	FGfg Men's 21 Speed Wh	Cancel	11/21/2014	12/31/9999	
✓	WO 1004	MBPD01	Pedal Assembly	Cancel	11/21/2014	12/31/9999	
	WO 1003	MBSP01	Seat Post	Reduce qty by 14	20	6	Each
	WO 1006	MBWH01	Wheel Assembly	Cancel	11/21/2014	12/31/9999	

The screen generates a list of recommendations on which work orders should have their “needed by” dates changed, the quantities they have “on order” updated, and even which ones should be “cancelled”.

Then it presents that information for you to review and choose orders to automatically change with the click of a button.

The list of changes that were made are easily shared with others in your company by printing, exporting to a spreadsheet, or creating a PDF file.

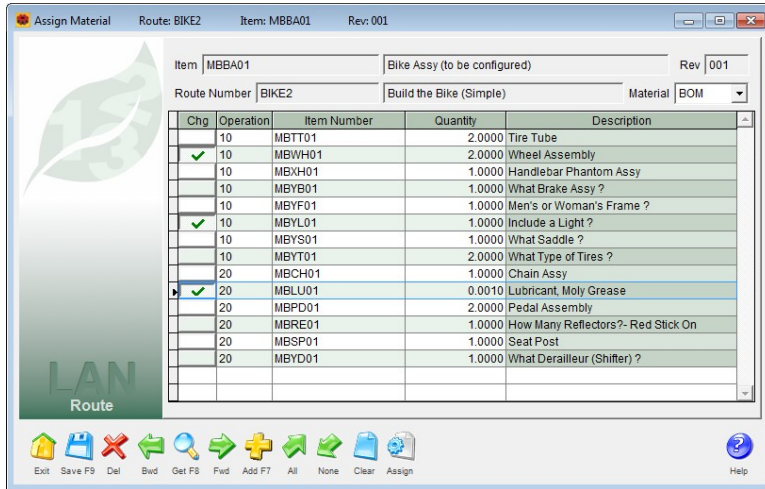
Delete Closed Dates – In the Machine Module you will find a new utility that will allow old records of dates the facility was closed to be removed!

Printing Fetch Results – A screen showing the results of the search is displayed when Fetch does not find an exact match. This information may have been the intent of the search. For example, if the objective was to see a list of all bicycles that are “red” that is what will be displayed. Now you can print this list from the screen!



Assigning Materials to Routes – Completely rewritten with a new screen and more capabilities,

matching inventory items to the route operation steps on which they are used is easier than ever!



Make mass assignments of material and/or operation steps, in addition to selectively making changes.

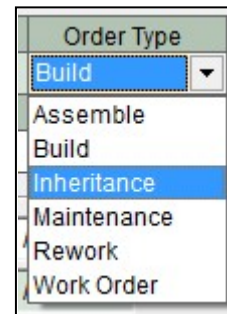
Use a bill of material as a starting point and add new items from inventory to the materials list. Or build the materials list from scratch using items you select from inventory.

Include on the material list items which are a byproduct of the manufacturing process and are expected to be returned to inventory.

Inheritance Work Orders – Auto-assign finished good serial numbers based on the serial numbers issued from inventory to the work order!

One example would be the manufacturer who starts with a serial numbered inventory item and wants to use that same serial number on their finished good for tracking and documentation purposes. The “Inheritance” type order neatly solves this challenge.

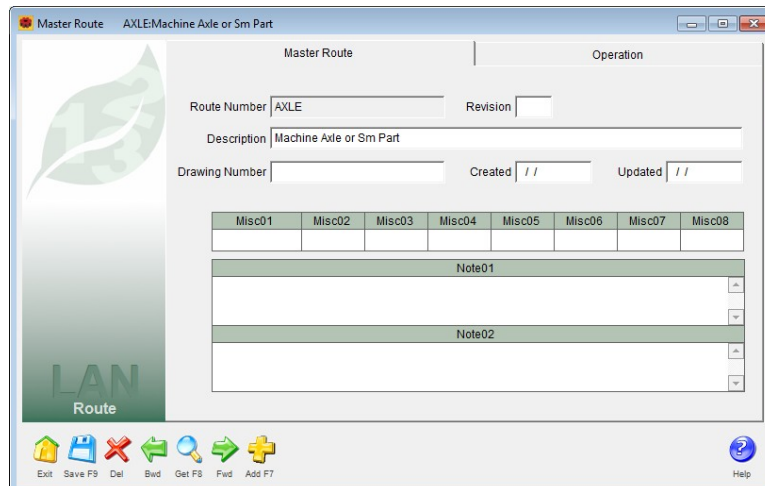
In the case of a company that makes multiple items originating from the same serialized inventory item they now have traceability back to the source. The original serial number has a consecutive letter appended to it for each of the multiple finished items.



For a company that rebuilds or refurbishes serialized products, the item can easily retain its original serial number through the entire process.

Reworked Route UDFs – The

Master Route screen *Header* tab and *Operation* tab have had their user defined fields redesigned to the standard ALERE miscellaneous fields and notes structure. As a result two new miscellaneous field codes were added to the **Global Codes Definitions** table. They are engineered to replace the previous UDF fields on the *Master Route* screens and the *Work Order Route* tab.



Transaction Notes – With a field for notes added to the *Work Order Transaction* tab, individual notes can be added to each transaction!

Streamlined Over Issue – The setting in ALERE Accounting to always over issue from inventory will be automatically passed to Manufacturing so that when a transaction to issue material is used you will not be presented with that question. It will simply select any remaining material from the default location after using up the stock from the current stock.

This behavior can also be enabled with a **Start Up User Hook** if ALERE Manufacturing is integrated with another accounting package.

ID Fix Button – On the ID tab of a work order the **Fix** button was changed to repair incorrect “Unfinished Parent IDs” and alert the user to those IDs.

BOM Default Order Type – The *BOM Master* screen has a new combo box to allow you to define the default order type for any work order created using that BOM.

Cost Override – The *Work Order Processing* screen has a new **Allow Cost Update** check box to control if the finished good cost screen will be presented or not.

Validating Route Updates – The *Route Update* screen now validates the route and does the following:

- A message is displayed if there are no results for the route/date range specified.
- Operation steps are displayed in red that were manually added to work orders that were not originally on the master route.

Additional DAQ Scripts – The *Work-In-Process* (IP) and *Work Center Usage* (UW) Data Acquisition scripts have been expanded to create two new scripts, named IPS and UWS. The scripts will request the serial number and store it in the new transaction notes field when posting either of these transactions on work orders that produce serialized finished goods.

Both of these scripts use the operation step that has been entered and the work order route to determine the work center. The work center is then stored in the **Item/Employee** field for that transaction.

The *Usage Work Center Login/Logout* (UWL) script allows work center start and stop times to be logged and automatically posts a UW transaction upon logout.

The *Labor Idle Login/Logout* (LIL) script allows logging start and stop times for the *Labor Idle* transaction. The LI transaction is posted upon logout.

Report Changes - Numerous options have been added and or expanded and information has been added to reports. Here is a list:

- *Manager > Control Reports > Audit Trail* - Includes changes made in the User Logins table.
- *Order > Process Reports > Work Orders* – Miscellaneous notes are now included on the report.
- *Order > Activity Reports > Transactions* – A **Show Transactions Notes** option has been added.
- *Plan > Control Reports > Supplier Demand* – An **Order Status** option has been added that can include orders recommended from Plan, purchase orders currently in the linked accounting system, or both.
- *Plan > Control Reports > Supplier Demand* – A **Report Format** option has been added that can show the information in standard or bucketed formats. The bucketed format shows seven weekly buckets followed by ten 28 day buckets.

- Buttons on any report can now be pressed using the keyboard hot keys **CTRL+F1** to **CTRL+F7** corresponding to the button's position from left to right in the button box.

User Rights - New user rights have been added as follows:

- **BRDS** *BOM > Activity Reports > Disassembly*
- **MMDC** *Machine > Utility > Delete Old Closed Dates*
- **OFFX** *Order > Work Order > ID Tab > Fix Button*
- **OMOL** *Route > Operation Library*
- **ORMI** *Order > Control Reports > Material IDs*
- **PMPP** *Plan > Order Push/Pull*

TIW Technology, Inc.
Youngs Hill Road, Easton Pa 18040-6726
Phone 610.258.5161 Fax 610.258.6217
Visit our web site at www.tiwcop.com

Copyright © 2014 by TIW Technology, Inc.
ALERE and ALERE Leaf Logo are trademarks
of TIW Technology, Inc. All rights reserved

